



CORSAIR iCUE Software Release Notes

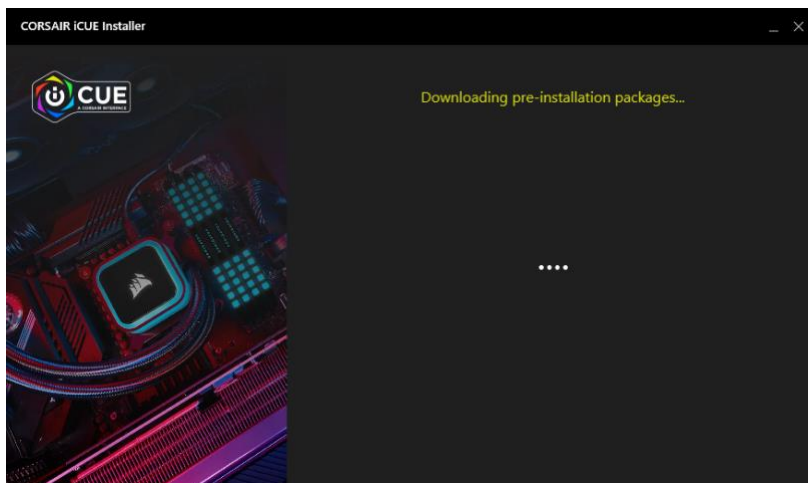
For additional information about your products, visit <https://help.corsair.com/hc/en-us> for product support and FAQs.

For iCUE tutorials, visit our CORSAIR LAB YouTube channel:

<https://www.youtube.com/playlist?list=PL8YayGMfPGnVq1c-tKd8r9NPqTWEmW9Ly>

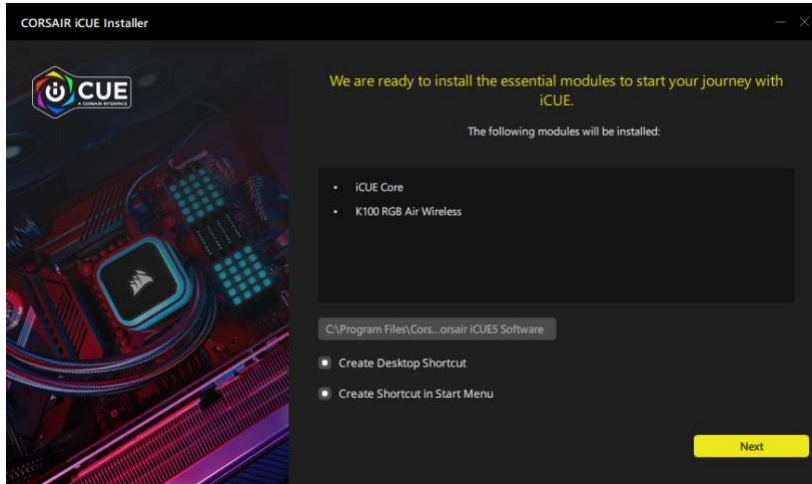
Modular Installation

With the latest update to iCUE, we have changed how iCUE will be installed and updated from this point forward. With our new modular back end, iCUE will no longer consist of a single large package. Instead, users will be downloading a very small installer that, when started, will uninstall existing versions of iCUE and automate the downloading and installation of modules.



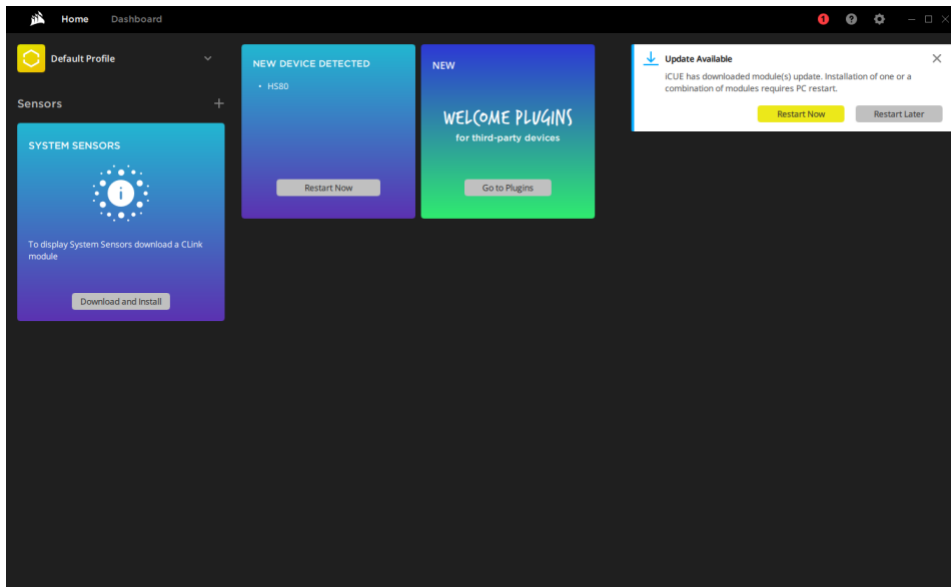
To address the previous experience of iCUE having a large footprint (3+ GB), we have streamlined the experience by only installing what is required to support your products.

For example, if iCUE only detects a K100 RGB Air Wireless keyboard, then the software will only download two modules: iCUE Core and the K100 RGB Air Wireless module.



As a result, iCUE will no longer need to host the files to support products you currently do not own yet and will now only take up a fraction of the hard drive space compared to previous versions.

If, in the future, as you add more iCUE-supported products to your setup, iCUE will automatically detect them and install the additional modules you need for the products to be fully supported. Users will also be able to choose and install specific third-party plugins from our partners that share our ecosystem.



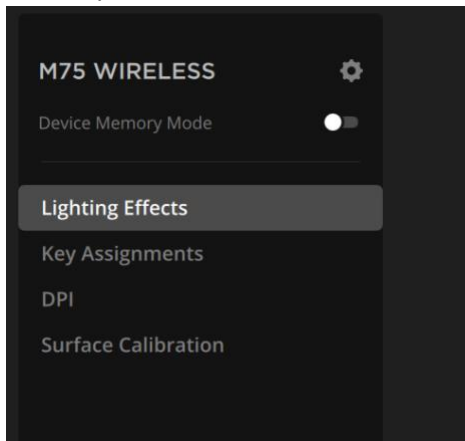
After this update, iCUE will no longer require a complete uninstallation and installation of the software for each update.

iCUE 5.14.93 Issues Resolved

Note: 5.13 was not released to the public due to the large number of changes. This update will take users from v5.12.97 directly to v5.14.93

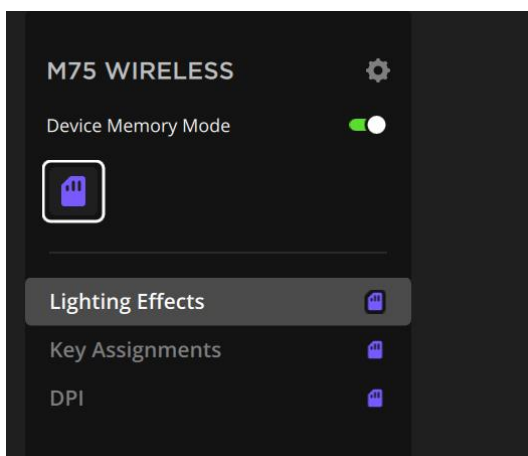
Software Enhancements

- One of the newest features (and changes in the user interface) is the implementation of Device Memory Mode



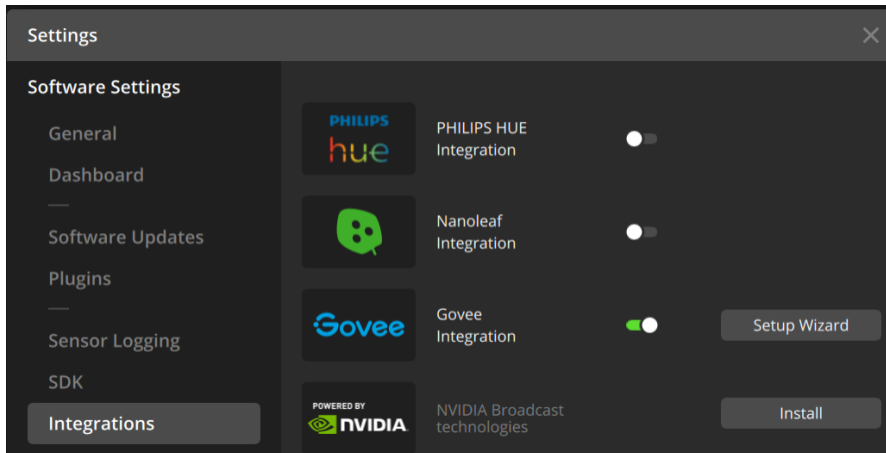
Device memory mode allows a product to be configured in iCUE in the 'hardware state'. Previous iterations of iCUE require you to quit iCUE in order for a device to work in the hardware state. Hardware states for our devices allow for device behavior without a dependency on iCUE running in the background. Examples of hardware states include the color of lighting on your Fans and Coolers under 'Hardware Lighting' or Hardware Key Assignments for your mouse and keyboard.

When enabling Device Memory Mode, you can now customize your devices with the same hardware configurations without quitting iCUE to view the changes. This will make it easier for you to view and save your changes as you configure your devices



Device Memory Mode does not change options (and their limitations) in the hardware state but it allows users to manage their configurations in a clearer and more accessible method.

- iCUE now supports a limited number of Govee products. This allows users to detect and control Govee products in iCUE to synchronize with all iCUE-compatible devices. Features like per-LED lighting and iCUE Murals are compatible with Govee devices in the iCUE ecosystem. This feature can be found in Settings > Integrations:



For proper setup of Govee devices with iCUE, please follow the Setup Wizard exactly as described. You will need to enable **LAN Control** in your Govee mobile application as a part of the setup process.

The following products are supported in our initial release of Govee support:

RGBIC Pro Strip Lights

- H619A - 5m
- H619B - 7.5m
- H619C - 10m
- H619D – 27.5m
- H619E – 210m
- H619Z - 3m

RGBIC Neon Rope Lights

- H61A0 – 3m
- H61A1 – 2m
- H61A2 – 5m
- H61A3 – 4m
- H61A5 – 10m

RGBIC LED Neon Rope Lights for Desks

- H61C3 – 3m
- H61C5 – 5m
- H61C2 – 2m

Glide Hexagon Light Panels

- H6061

Additional Govee products will be supported in future iCUE releases

- Viewing profiles are no longer collapsable – they are now shown vertically for easier edits
- Updated CPUID SDK to the latest version
- HARPOON PRO will now properly show up as a device in Murals
- Resolved some issues with modules not properly uninstalling when deleted

- Resolved an issue that prevented the NVIDIA BROADCAST's "Learn More" hyperlink from opening correctly
- Toggling Lighting Layers will no longer cause the selection to auto-select the last layer
- iCUE LINK Hydro Coolers in White will now show the proper image in Murals
- Profile names can no longer be blank
- Any iCUE application restart notifications will now show the device associated with the request

HID Product Enhancements

- iCUE will no longer crash when changing the DPI and unplugging the mouse afterwards
- Resolved various issues with headset detection and operation with iCUE macOS
- Dragging and dropping DPI Presets from the DPI List will no longer cause iCUE to quit unexpectedly
- The debounce customization in Settings for certain iCUE keyboards will now show the correct value after configuration
- Resolved an issue that may cause errors in iCUE when deleting an onboard profile on SCIMITAR/ELITE RGB
- Adding a widget to iCUE NEXUS will no longer cause the opacity feature to disappear from background options
- Resolved an issue that prevented G-keys and Lighting Link from working properly for iCUE NEXUS

DIY Product Enhancements

- Triggered Alerts will now properly show in the applicable device tiles under the Home Page
- VENGEANCE DDR4 modules detected in iCUE will no longer cause the DDR5 version of the module to be downloaded
- Users will now be able to use the same name on different sensors
- iCUE LINK Devices will now properly illuminate during the setup wizard
- Users will now be able to drag and drop devices during setup after a firmware update
- Resolved a text issue with LCD screen rotation in different languages
- Resolved an issue that prevented a screen from being deleted after adding it as a custom image/GIF
- QX fans now have a Change Case Color option, so users can select the white version for the user interface
- Resolved various issues when configuring the scaling of custom images for LCD screens
- Resolved an issue that caused iCUE to quit unexpectedly after a successful firmware update to the Voyager A1600 Touch Bar and renaming of the screen

iCUE 5.12.97 Issues Resolved

Software Enhancements

- Resolved an issue that caused iCUE to unexpectedly quit when importing a profile on a system with a NVIDIA Founder's Card GPU installed
- Battery Status sensor widgets on the Dashboard will now properly show a graph in the background
- Certain widgets will no longer be missing their context menus when added to the Dashboard
- Lighting Effects will no longer be duplicated when dragging and dropping layers in the list

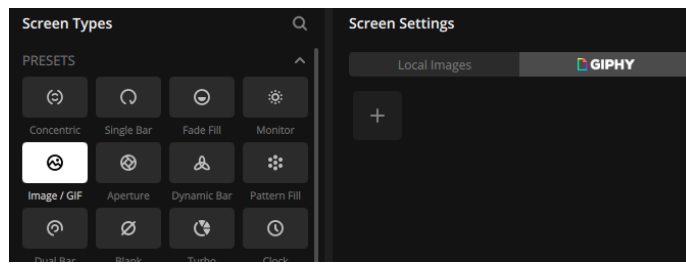
- Resolved various issues with naming in Murals
- HARPOON PRO will now properly show up as a device in Murals

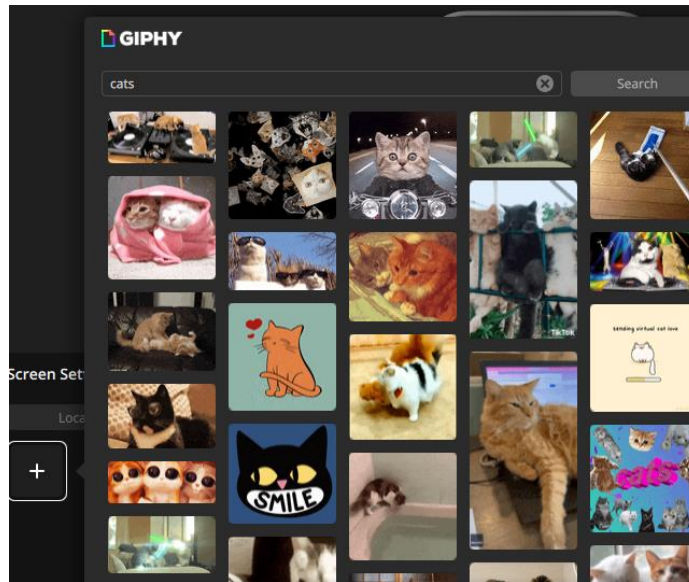
HID Product Enhancements

- Resolved an issue that causes KATAR PRO WIRELESS to stop responding if the polling rate is changed to 2000 Hz
- Resolved an issue that prevented Imitate Holding Key from working properly with Hardware Key Assignments
- Resolved various issues that may cause iCUE to unexpectedly quit when changing polling rates across various devices
- Resolved various issues that caused keypress combinations from working properly with Japanese layouts on certain keyboards
- The Brightness Control icon will no longer be missing for the K100 Control Wheel
- Resolved an issue that caused K70 CORE RGB to show up as a CRP_DISABLED device after a firmware update
- Resolved the following issues with iCUE NEXUS:
 - Background image will now display properly when using the 640x48 px window size
 - Image rescaling logic was improved
 - Profile switching issues were fixed so that all profiles will properly appear on the rotation list
 - Changing Lighting Link will no longer cause the name of the effect to disappear
 - Renaming an EQ preset will properly update the device screen

DIY Product Enhancements

- GIPHY support has been added to all LCD devices – users can now browse, download, and add animated GIFs to their devices. To find this feature select 'Images/GIF' then click the 'GIPHY' tab:





- Resolved an issue that caused a delay in DDR5 detection when creating a new user profile
- Resolved an issue with VOYAGER Gaming Laptops battery widgets not updating their status properly after the charger is removed – the widget for this sensor can also now be properly added to the Home Screen
- The brightness between the keyboard and the touch bar for VOYAGER Gaming Laptops will now be properly adjusted together when using the hotkey
- An additional prompt has been added to the Performance Manager tab for DDR5
- Resolved various issues with the customization of Alerts
- Resolved a display issue when using custom fan curve names when a QX fan is connected

iCUE 5.11.96 Issues Resolved

Software Enhancements

- Resolved a critical issue that enables 'Enhance Pointer Precision' in Pointer options under WinOS Mouse Properties – iCUE will also no longer re-enable this option on application restart

iCUE 5.11.95 Issues Resolved

Software Enhancements

- iCUE will no longer crash when switching presets in Murals
- Improved tooltips for better consistency and placement in iCUE
- When Lighting Layers are toggled, the last layer in the list will no longer be auto-selected

- Naming a Murals effect with a long name will no longer cause the Go To Murals button to disappear
- Resolved an issue that causes the device image to increase in size briefly when trying to downsize
- Hovering over shortened text on a sensor in Dashboard will now properly show the full text as a tooltip
- Resolved an issue that caused graphs to still appear for sensor widgets in Dashboard even after hiding them
- Improved the responsiveness of the Color Wheel

HID Product Enhancements

- Resolved an issue with French language that affected Macro – Copy Event and Macro – Delete Event
- Copying “Switching Profile” as an assignment will now be possible even without a key being assigned
- Cancelling the firmware update on Void RGB ELITE Wireless will no longer cause it to disappear from the device list
- Resolved various lighting effects issues with NIGHTSABRE, DARKSTAR, and K70 PRO Wireless
- Resolved an issue with NEXUS battery status widgets that prevented certain devices from reporting their battery levels
- A background image will now properly be displayed when a screen on NEXUS is imported

DIY Product Enhancements

- Resolved an issue that affected Time Warp lighting after a device’s firmware update is completed
- Resolved an issue that affected Fan Curves with Fixed % and Fixed RPM when used with Fahrenheit units
- Resolved an issue that caused profile 4 in Performance Manager for DDR5 to not appear unless iCUE is restarted
- VOYAGER battery widget will now properly report its battery level
- Rotary Stack and Spiral Rainbow will now play properly on the Hydro X XG7 RGB
- Resolved an issue that caused the iCUE LINK HUB to display an improper text string when the language is changed
- Resolved an issue with the 1000D in Murals that prevented some options from appearing during configuration
- LT100 tower adjustment now works properly when changing the device tower arrangement

iCUE 5.10.82 Issues Resolved

Software Enhancements

- Resolved an issue that prevented firmware updates for some devices on iCUE macOS
- Implemented some minor design enhancements related to fonts and the use of more toggles where appropriate
- Exported system logs will now contain information for installed modules and packages
- Resolved some text overruns for various languages in iCUE

- iCUE will now continue downloading new modules after a lost internet connection is resolved
- 'Hide Graph' now works for Sensor widgets
- Zoom In/Out now works properly for Murals
- 'Set to Original Size' feature for Murals will no longer result in rotation buttons showing the wrong icon
- Resolved an issue that may cause iCUE to lose connection with the Philips Hue hub
- Resolved various crashes reported by our end users – thank you for continuing to submit your crash logs for us to review

DIY Product Enhancements

- Resolved an issue that prevented DRAM to appear as a configurable device after an iCUE installation
- Improved notifications related to iCUE LINK System Hub and its over-current protection warning
- Implemented Profile import and export enhancements for all iCUE LINK devices to improve the experience of sharing lighting customization
- Resolved some calculation issues that resulted in incorrect values related to the DDR5 Profile Manager
- The framerate slider for XD5 Elite is now available in Device Settings

HID Product Enhancements

- Improved the firmware update process for K70 CORE that resulted in an unresponsive state on rare occasions
- Changing polling rates for K70 CORE will no longer cause iCUE to crash
- Launch Application key assignment will now properly work when assigned to a key on K100 RGB
- Resolved various issues with K70 MAX related to actuation presets and secondary assignments
- iCUE will no longer crash when waking up from sleep if a VIRTUOSO XT connected in wireless mode
- Resolved an issue for iCUE NEXUS that prevented G-Key assignments from triggering
- Resolved an issue for iCUE NEXUS that prevented the background images for widgets from being applied properly

iCUE 5.9.105 Issues Resolved

Software Enhancements

- Resolved an issue that causes iCUE to crash on startup
- Resolved an issue with LS100 that causes iCUE to crash on device disconnect
- Resolved a conflict with iCUE with devices missing a manufacturer label in the USB string
- Improved the usability of vertical sliders when resizing the window
- Moving the window during an iCUE installation across monitor screens will no longer result in a black bar
- Resolved an issue with Launch Application that opens a folder instead of the application

- Users can now remove device modules even when iCUE is not connected to the internet
- Resolved an issue that causes other actions to be highlighted when assigning a modifier key
- Users will no longer be able to remove a module while it is updating
- Resolved various Dashboard bugs with adding and removing sensor widgets
- Nanoleaf in Canvas will no longer cause iCUE to crash after pairing multiple devices

DIY Product Enhancements

- The LED ring will now properly rotate with the LCD on all LCD based coolers
- Custom Fan Curves now properly work when used with various CPUID sensors
- Removing a Custom Cooling Fan Curve will no longer cause all fans to revert to the Balanced preset
- Hiding the graph for DIY devices will now properly work after an iCUE restart
- Resolved a conflict with data shown in Alerts when users switch between Fahrenheit and Celcius
- Voyager A1600 Cooler will no longer be shown as a Xeneon monitor
- Device Settings will no longer be missing features after a firmware update on H100i ELITE LCD coolers
- Custom Screen Preview will no longer show the wrongimage with LINK LCD-based devices
- Resolved various minor bugs with the LCD screen and image customization
- DDR4 modules will no longer appear together with DDR5 modules (and vice versa)
- iCUE will no longer show Vengeance PRO DRAM as a name if it has been replaced with DOMINATOR DRAM

HID Product Enhancements

- Updated the hyperlink in the notification for DOLBY ATMOS
- The front LED and light edge LED on GLAIVE mice will no longer play incorrectly in iCUE
- M65 RGB PRO now properly saves hardware lighting to the device
- Resolved an issue with text overrun with various languages that prevented users from saving a hW profile
- Resolved an issue that prevented “Disable Key if Lock Button is On” from function
- The lighting playback is now properly synced between iCUE and the device for the Control Wheel tab
- Resolving an issue with NEXUS when using Lighting Link
- ENVISION PRO will no longer show battery status as Unknown at near empty battery levels
- Resolved an issue with audio devices crashing iCUE when switching from Playstation to Multipoint Mode

iCUE 5.8.130 Issues Resolved

Software Enhancements

- Software and Games tab in iCUE settings have been combined into a new tab called SDK for better organization

- CPUID has been updated to the latest SDK and further optimized for better performance on the system when iCUE is open
- iCUE Home Sensors and Dashboard widgets will no longer randomly reset to default
- Resolved a rare issue that causes the name of a lighting effect to appear incorrectly

HID Product Enhancements

- Implemented Rapid Trigger customization for K70 MAX keyboards. Users will now be able to configure Rapid Trigger for any key or groups of keys. Please ensure you have also updated to the latest firmware on your device to enable this feature
- Media keys assigned with Volume Up and/or Volume Down will now repeat on a long key press
- K70 MAX will no longer cause a crash in iCUE when switching a profile through a secondary actuation
- NEXUS will no longer display a black screen when replugging a Slipstream Receiver

DIY Product Enhancements

- Resolved an issue with Commander Pro that prevented Custom Cooling presets from working properly
- All LCD based devices now support screen rotation – you can find this option under Device Settings. For a future update, the LED ring will also match the orientation of the LCD screen
- Improved the accuracy of wattage sensors for iCUE Digital PSUs
- Default fan curves for QX fans have been improved
- Time Warp lighting effect will no longer be affected after a firmware update
- Resolved various issues related to Alerts for Cooling Devices
- Improved the playback of certain lighting effects for the iCUE LINK GPU adapter
- Resolved an issue that caused cooling presets to disappear after updating the firmware on the Commander Pro

iCUE 5.7.106 Issues Resolved

Software Enhancements

- Additional products have been added for iCUE SDK support
- CPUID SDK is now directly integrated into iCUE instead of previously relying on a service. Users should see overall system performance improvements with device polling and dashboard metrics. We are aware of an issue that some AMD GPUs may not report their temperature and will resolve this in iCUE v5.8 with an updated CPUID SDK
- Updated some of the fonts in iCUE for better readability, especially for East Asian typefaces
- iCUE will now properly notify users to restart after re-installing NVIDIA plugins
- Resolved an issue with iCUE not properly resizing windows automatically based on scaling
- Resolved an issue that prevented users from rotating devices in Murals after resizing

DIY Product Enhancements

- Time Warp Lighting Effect will no longer conflict with third-party lighting integrations

iCUE 5.6.98 Issues Resolved

DIY Product Enhancements

- Removed the notification message related to DDR4 that was present in the previous version. Please feel free to contact our support team if you have any questions or concerns

iCUE 5.6.97 Issues Resolved

Software Enhancements

- Resolved an issue with some text not being translated in the Installer
- Resolved an issue that prevented the installation process from starting if a different language is selected
- Resolved an issue that prevented some modules from being deleted
- Icons will no longer be skewed after deleting a profile with a custom image
- iCUE will no longer crash upon waking up from sleep if “Monitor Screen” is selected as a Mural
- Removing favorited Murals will no longer cause the device layout to reset to default
- iCUE for macOS will now properly uninstall
- Profile icon images will no longer be blurred in Murals
- Additional GPU sensors are now available for NVIDIA and AMD graphics cards
- SoundID plugin has been updated

HID Product Enhancements

- iCUE NEXUS and VOYAGER laptop users will now be able to assign different colors to both the text and the graph for their sensors

DIY Product Enhancements

- Users with CORSAIR DDR4 memory that has corrupted SPD values from a previous iCUE bug will be notified in the software to proceed with an RMA exchange to resolve the issue
- iCUE LINK Hydro Coolers predefined curve presets for custom cooling now matches the actual curve data for the Quiet/Balance/Extreme presets
- Lighting Setup and Device Settings are now available as tabs for the iCUE LINK System Hub
- iCUE will no longer crash if “Add to Home” option is used for Commander Core XT sensors in the Dashboard

iCUE 5.5.134 Issues Resolved

Software Enhancements

- Updated NVIDIA Broadcast SDK – NVIDIA 4000 series of GPUs are now properly supported
- Resolved an issue with iCUE firmware update that causes the window to display no information after a successful update

HID Product Enhancements

- SCIMITAR RGB ELITE will no longer be missing the Profile Switch button for re-assignment
- Renamed widgets for NEXUS will no longer cause a graphical overlap

DIY Product Enhancements

- The Cooling Preset curves (Quiet/Balanced/Extreme) for all iCUE LINK AIO Coolers will now use the coolant sensor instead of the CPU package sensor
- Resolved an issue with Time Warp that prevented the enabling of Hardware Mode
- Resolved a rare issue with QX RGB fans that may prevent the customization window from appearing
- Improved the lighting effects playback for QX RGB fans
- Resolved issues with “All” in the Quick Lighting Zone for QX RGB fans
- Gaming Mode has been removed from VOYAGER systems as a preset cooling mode

iCUE 5.4.98 Issues Resolved

Software Enhancements

- A new version of the iCUE Plugin for Stream Deck is now available. Users will now be able to assign units of measurement (e.g., Celsius/Fahrenheit) to sensors
- Additional Context Notifications have been added to improve the user experience
- iCUE macOS® now supports direct upgrades from iCUE 4.33 to the latest version of iCUE 5.x
- iCUE macOS® now supports our crash reporting service
- Resolved an issue that allowed users to accidentally delete iCUE modules

HID Product Enhancements

- iCUE NEXUS and VOYAGER laptop users will now be able to assign different colors to both the text and the graph for their sensors
- Resolved an issue with NEXUS that would result in a black screen if users deleted and re-applied the same image
- The selected color icon for NEXUS screens will no longer always show as black

DIY Product Enhancements

- Reenabled the XMP Performance Manager for DDR5 products that support it
- The iCUE LINK System Hub will no longer cause the device settings window to display nothing when the firmware update process begins

- Resolved an issue with WMI that would cause Windows to not detect any of our RGB Memory properly (thus affecting iCUE detection)

iCUE 5.3.102 Issues Resolved

Software Enhancements

- A new version of the iCUE plugin is now available in the Stream Deck store. The iCUE plugin now features CORSAIR audio features such as EQ change, microphone on/off toggle, surround sound toggle, battery widgets for wireless devices, and more!
- Lenovo iCUE laptops now have Murals support
- We have resolved an issue that caused some devices to no longer be detected after updating to Windows® 11 version 22H2
- Murals Audio Lighting Effect will no longer cause iCUE to crash when the system is awakened from Sleep/Hibernate

HID Product Enhancements

- SoundID is now supported in iCUE for macOS®
- Resolved an issue with popping noises related to aggressive EQ settings in iCUE for macOS®
- Support has been added for iCUE LINK devices

DIY Product Enhancements

- The Clock Screen Effect for Elite LCD Coolers will no longer cause iCUE to crash

iCUE 5.2.128 Issues Resolved

Software Enhancements

- The iCUE plugin for Stream Deck has been vastly improved. Users can now populate their Stream Deck keys to display any available sensor from the Dashboard. In addition, users will be able to toggle different cooling settings for their DIY devices, change the active Mural effect with a single button, and more
- iCUE-compatible motherboards and GPUs are now supported in Murals
- Users will now be able to choose different layout sizes (4:3 or 16:9) for Murals
- CPUID SDK has been updated
- Improved the stepping (1%) and the zoom range (1-200%) for the media editor when customizing an image for iCUE NEXUS, Profile Icons, Profile Backgrounds, Screen Settings (Elite LCD), and custom images/videos for Murals
- Long device names in Murals will no longer overlap the Hide Device button
- Unplugging a device will no longer reset the Murals layout(s)
- iCUE longer will no longer prevent an installation if the Portuguese language is selected

HID Product Enhancements

- Unplugging and re-connecting a Dark Core RGB/SE mouse will no longer result in a duplication of Lighting Effects
- Dark Core RGB/SE now properly shows the correct alternating colors for the Water Lighting Effect
- Harpoon RGB will now properly wake a system from sleep
- Resolved a detection issue associated with the HS80 Receiver

iCUE 5.1.1114 Issues Resolved

DIY Product Enhancements

- We were able to identify an issue with the XMP Profile Manager affecting users with CORSAIR DDR4 memory in iCUE. As a result, we have temporarily removed the XMP Profile Manager feature and will re-implement it once we are able to provide a fix. Users on existing versions of 5.0 and 5.1 should upgrade to this version of iCUE immediately.

We apologize for any inconvenience as a result of this problem, and any users that have issues with iCUE and their DRAM should reach out to our tech support team at <https://help.corsair.com/hc/en-us/requests/new> for assistance.

iCUE 5.1.1113 Issues Resolved

Software Enhancements

- Resolved issues with missing iconography in Lighting Effects
- Various improvements have been made to module updates
- Improvements have been made to Murals to support resetting device sizes back to default and allowing users to simultaneously resize across different devices
- Color accuracy has been improved for the Monitor Screen effect in Murals on HDR-enabled monitors
- Users will now be able to reinstall a module after uninstalling it
- Resolved various issues with ASUS motherboard support

DIY Product Enhancements

- Images in iCUE will no longer disappear for Elite LCD after a firmware update
- Resolved issues with RGB DRAM lighting playback in a different direction other than what is configured

HID Product Enhancements

- iCUE Audio Driver has been updated with minor fixes

- Add Current Profile" is no longer missing from Dark Core RGB/SE

iCUE 5.0.147 Issues Resolved

Software Enhancements

- Dashboard sensors and plugins are now available as optional when no devices that rely on sensors are installed, this is part of the new modular update
- Resolved various bugs with iCUE Murals and improved the Murals Wizard
- Murals now has a "Send to Back" order feature when stacking device images on top of one another
- The coolant temp widget is no longer disabled when an Alert is triggered
- Retrying firmware updates through notifications will now properly restart the firmware update process
- Resolved an issue with scrolling when the pointer is hovering over the bottom of the Home screen
- Sensors and Fan widgets are no longer shown in random order on the Dashboard
- Resolved an issue that prevented Key Assignments to from being assigned to a key after the Clear feature was used

HID Product Enhancements

- K100 AIR and K65 MINI RGB will no longer cause a crash when creating a lighting effect from the Library while the devices are in wireless mode
- K65 MINI RGB will now properly show a tilda (~) when FN+Shift+Esc is pressed
- Resolved issues with Retain Original Key Output and Disable Key if Lock Button is On for certain keys for K65 MINI RGB
- Resolved an issue that prevented iCUE from detecting the keyboard on Voyager laptops