



## CORSAIR iCUE Software Release Notes

### iCUE 5.31.112

#### What's New:

- Added GIF support for MARK75 LCD Screen
- Updated SoundID Plugin to v2.0.10

#### Bug Fixes:

- Fixed an issue where the iCUE window had no maximum size
- Fixed an issue for the Plugin tab, where, while updating iCUE, the progress bar did not appear on the "Updating..." label
- Fixed an issue for the Plugin tab where the "Restart Required" popup was displayed incorrectly
- Fixed an issue where the "Welcome Plugins" banner incorrectly appeared in macOS after the "Don't show this again" option was selected
- Fixed an issue where audio was not playing during profile switching
- Fixed an issue in the Plugin tab where the "Latest Version" notification fails to disappear after reopening the tab, even when the plugin is up to date
- Fixed an issue where the user was unable to close the "Restart Required" popup notification by clicking outside the popup
- Fixed an issue where the sensors auto-changed their position after reopening iCUE and switching to another tab
- Fixed an issue with the Home sensor where the "Add" button was always enabled
- Fixed an issue where the sensor table couldn't be closed by clicking outside the table
- Fixed an issue for Lighting Effects Solid effect where the two color points disappeared when dragging the color area and right-clicking at the same time
- Fixed an issue for iCUE windowed mode, where using it in half screen mode, the right edge could not be resized

- Fixed an issue for iCUE Settings where the notifications in Software Update overlapped when scrolling up or down
- Fixed an issue where the "Switch to Previous on the List/ Switch to Next on the list" arrow buttons lost their boundary
- Fixed an issue where selecting a lighting effect from a section would close the other section
- Fixed an issue where the user couldn't create new Zone Lighting on KB/Mice after running the Wizard for iCUE LINK
- Fixed an issue where iCUE crashed when any mice were connected for the first time and DPI Presets were deleted
- Fixed an issue for the Dashboard where widgets could not be dragged if its context menu was open
- Fixed an issue on the Dashboard that caused the widget to flicker when being dragged around
- Fixed an issue for the Dashboard where assigned actions overlapped the assignment title when the scroll bar was moved up or down
- Fixed an issue for the Dashboard where "Mic Vol" and "Sidetone" bars showed inconsistent lengths
- Fixed an issue where the Dashboard reopened multiple times when users clicked it repeatedly
- Fixed an issue for the Dashboard where the Order of widgets changed randomly
- Fixed an issue with the Dashboard where iCUE crashed when users unplugged the USB receiver and pressed the "Home" and "Dashboard" tabs too many times
- Fixed an issue for VIRTUOSO MAX WIRELESS where the battery icon was missing when the device was turned off
- Fixed an issue for VIRTUOSO MAX WIRELESS where, when using the "Customize Dashboard" panel, iCUE allowed the user to expand the "Headset/Assignment" panel
- Fixed an issue for MAKR 75 where, if the "Discard Changes" modal popup was open, switching to wireless mode and pulling out the cable caused iCUE to crash
- Fixed an issue for MAKR 75 where, when using the LCD module and saving the Hardware profile, iCUE did not prevent the user from "quitting" iCUE, and a crash state was shown
- Fixed localization and translation errors

## **iCUE 5.30.90**

### **What's New:**

- Added additional devices for Govee support in iCUE: Govee Strip Light with Cover (H61B2 H61B3 H61B5 H61B6), Govee Strip Light S (H612A H612B H612C H612D H612E) Gove Strip Light 2 Pro (H61F2 H61F5 H61F6)

### **Bug Fixes:**

- Fixed an issue that caused iCUE to crash when reopening iCUE and creating a profile
- Fixed an issue where when opening Device Settings of Mice at Home Screen and switching profiles in the system tray, iCUE crashed
- Fixed an issue where lighting effects could not be dragged and dropped from the Lighting Library to one or more selected LEDs

- Fixed an issue where the selected text in the text field for iCUE profiles was not properly highlighted in yellow
- Fixed an issue where while reloading the FW for headsets, the “Mic Boost” value tooltip displayed the incorrect value
- Fixed an issue where a HW profile could not be renamed by double-clicking
- Fixed an issue where the profile icon was displayed incorrectly by default
- Fixed an issue where the text popup of the profile name was shown outside of the tooltip in the iCUE tray
- Fixed an issue where the reorganization of the EQ Preset Cycle List was not allowed in the Headset EQ Switch action macro
- Fixed an issue where the bell notification number was displayed incorrectly
- Fixed an issue where iCUE lost the scroll bar while scrolling the modules in the Software Updates tab
- Fixed an issue where there was no tooltip for the profile that had a long name in the profile switching assignment
- Fixed an issue where plugin banners did not reappear when the reset button in iCUE Settings was selected
- Fixed an issue where, when losing connection to the network then reconnecting during the installation of iCUE, the installation failed and did not proceed
- Fixed an issue for Quick Lighting Zone where Devices in assignment view and physical devices still showed color even though they were not selected in Quick Lighting Zone
- Fixed an issue for Cooling Layers where when selecting the sensor and opening the drop-down list, the list displayed black
- Fixed an issue in the Assignment view for iCUE LINK devices where using the button that shows all devices limited the height for dragging and selecting the LEDs
- Fixed an issue where the three-dot menu still appeared after the alert state was triggered for DIY devices
- Fixed an issue for Lighting Effects where the color picker circle could be selected by clicking outside the circle
- Fixed an issue in the Lighting Effects tab where the incorrect flyout position from the assignment view was shown
- Fixed an issue where the rename function in the Device Memory Profiles popup elements was missing
- Fixed an issue where after completing the removal of a module, the "Restart Now" button worked incorrectly
- Fixed an issue for the YouTube Effect where the “Video Link” text was not properly aligned
- Fixed an issue for the Screen Setup tab where after switching the Device Memory Mode toggle, the zoom slider value displayed incorrectly
- Fixed an issue for the YouTube Effect where after reloading the Screen Setup tab, the description of this effect disappeared
- Fixed an issue for keyboards with Control Dials where the Color Wheel was unable to change the Control Dial color
- Fixed an issue for keyboards with Control Dials where after completing the naming on the control dial layer, the new name did not automatically update on the next panel

- Fixed an issue for keyboards with Control Dials where there was no limitation on the naming section in the control dial layer
- Fixed an issue for MAKR 75 where after adding two images in HW and toggling on Device Memory Mode, iCUE crashed
- Fixed an issue for MAKR 75 where after switching to the WL mode, going to sleep, and then selecting any device, iCUE crashed
- Fixed an issue for MAKR 75 where after turning on the Device Memory Mode toggle in WL mode with an unsaved image from USB mode, iCUE crashed
- Fixed an issue for MAKR 75 where the "Discard" screen button did not work, and iCUE was unable to use any features
- Fixed an issue for VIRTUOSO MAX WIRELESS where losing the internet connection during the Firmware Update process did not trigger the "Update Failed" hint
- Fixed an issue for SCIMITAR ELITE WIRELESS SE where Multiple color effects in "PRESETS" and "LIGHTING LINK" are not working with the "Side" zone
- Fixed an issue for SABRE RGB PRO WIRELESS CHAMPION where actions from the Assignment list cannot be added to the Assignment Library
- Fixed an issue for M75 WIRELESS where the device didn't support independent X/Y DPI functions
- Fixed an issue for M75 WIRELESS where when using the device in Device Memory Mode, the user can disable all DPI stages
- Fixed an issue for VIRTUOSO MAX WIRELESS where latency was observed when adjusting the brightness bar from 0% to 100%
- Fixed an issue for VIRTUOSO MAX WIRELESS where while failing the update progression, iCUE displayed the wrong message
- Fixed an issue for K100 RGB Control Wheel where actions could be automatically activated after pressing right-click
- Fixed an issue for K70 CORE SE RGB & K70 CORE RGB where the Assignment label did not appear correctly
- Fixed an issue for K65 PRO Mini where the Shortcuts List is incorrect
- Fixed an issue for LC100 where rotating the second triangle one time before adding more triangles resulted in the absence of the "+" button after the twelfth triangle was added
- Fixed an issue for USB ARGB FAN CONTROLLER where the device did not properly identify devices
- Fixed Localization and Translation errors

## **iCUE 5.29.103**

### **Note:**

- 5.28 was never released to the public due to significant changes listed below – The software is expected to update from v5.27.149 directly to v5.29.103

### **What's New:**

- Implemented a “Please Wait” message when trying to launch iCUE during the processing of the packages
- Updated CPUID to v1.3.3.7, which allows for proper detection of next-generation components

## **Bug Fixes:**

- Fixed an issue when changing the DPI settings for mice resulted in increased CPU utilization for iCUE.
- Fixed an issue that caused iCUE to crash after Windows startup if the app was opened using the taskbar icon
- Fixed an issue that caused iCUE to crash when recording gesture values on the Gesture tab while changing the polling rate
- Fixed an issue where iCUE NEXUS profiles were causing iCUE to crash
- Fixed an issue for the Cooling tab where, after right-clicking the search bar and clicking on the disabled functions (from the search sub-table), it automatically selected the cooling preset layer under the text
- Fixed an issue for the Cooling tab where the Cooling Presets do not have a naming limitation
- Fixed an issue for the Cooling tab where the software allows duplication of preset layer
- Fixed an issue in the Cooling tab where the sensor list appeared when a user quickly created new custom presets
- Fixed an issue for the Notification Center where no hint was displayed upon mouse hover for the close (“X”) or “Delete All” buttons
- Fixed an issue where the “Help” screen had overlapping letters
- Fixed an issue where deleting an iCUE profile with a long name resulted in the “Delete Profile” popup being cut off at the bottom
- Fixed an issue in iCUE Profiles where no hint was displayed when hovering over Linked Apps with long names
- Fixed an issue where, after selecting a new profile via the system tray, the profile wasn’t highlighted in the iCUE profile tray
- Fixed an issue in Murals where no hint appeared for items in the three-dot menu when hovering over shortened options
- Fixed an issue in the Lighting Effects tab where multiple effects could be unintentionally selected by holding the ‘Tab’ key, instead of allowing only a single selection.
- Fixed an issue in Key Assignments where multiple effects/assignments could be selected by holding down the ‘Tab’ key”
- Fixed an issue where the iCUE window had a white border along the left, right, and bottom sides
- Fixed an issue where the alert preset still shows in another profile after switching profiles
- Fixed an issue where adding a sound to a key assignment for switching profiles did not work properly
- Fixed an issue for the Key Assignments tab where the assigned key zone showed a white area instead of displaying the button
- Fixed an issue where the wrong battery status was reported for wireless devices
- Fixed an issue for headsets where the Corsair extension was enabled in MacOS systems’ Privacy & Security settings, but the user still received the notification that it was not

- Fixed an issue in Device Settings where hovering over the wireless device icon did not display any hint
- Fixed an issue for the Screen Setup tab where the Web URL screen did not have a hint when hovering the cursor on the zoom slider
- Fixed an issue in the Custom Screen List where the selected screen could be dragged, even though dragging should have been disabled
- Fixed an issue where, when configuring the LCD screen effect, iCUE did not properly display sensor names
- Fixed an issue for where, after disconnecting the Hydro Series Platinum Coolers and restarting the iCUE service, the "Cooling Logging" entry was not removed from iCUE Settings
- Fixed an issue for the Screen Setup tab where the Web URL screen could not use the magnifying glass to enlarge the image
- Fixed an issue with K70 PRO where the device incorrectly required an additional firmware update after a forced update.
- Fixed an issue with SCIMITAR RGB ELITE where Surface Calibration was not functioning correctly.
- Fixed an issue for Scimitar RGB ELITE where the font size in the "Key Assignments" panel was not synchronized
- Fixed an issue with VOID WIRELESS V2 where quickly dragging the brightness bar displayed random percentage numbers.
- Fixed an issue for VOID WIRELESS V2 where, after failing a firmware update, the "Close" button was not visible
- Fixed an issue for VOID WIRELESS V2/VIRTUOSO MAX WIRELESS where, after turning off the device, the battery status and percentage still appeared in the iCUE system tray menu
- Fixed an issue for VOID WIRELESS V2 where the "Create Quick Lighting Zone" option was not properly removed
- Fixed an issue for VIRTUOSO MAX WIRELESS where the device could not be paired after reconnecting the dongle
- Fixed an issue for VIRTUOSO MAX WIRELESS where the brightness value was auto-restored to 100% when the device was turned off
- Fixed an issue for HS80 RGB WIRELESS PRO/HS80 RGB USB/VIRTUOSO MAX WIRELESS where the "Mute on/off" icon gets smaller when saving to library
- Fixed an issue for VIRTUOSO MAX WIRELESS where the "Stereo" button state was not synchronized when turning off the device
- Fixed an issue for VIRTUOSO MAX WIRELESS in Key Assignments where an empty row appears in the Custom Press popup when Device Memory Mode is enabled
- Fixed an issue for VIRTUOSO MAX WIRELESS where the warning label while updating did not display the selected language
- Fixed an issue for VIRTUOSO MAX WIRELESS where, after showing the "Warning Maximum of layers" in Device Memory Mode, all options were still shown in the context menu
- Fixed an issue for Virtuoso MAX Wireless where, while pairing the device and re-plugging the cable, the wizard was frozen and couldn't be started
- Fixed an issue for MM800 RGB POLARIS where, when right-clicking on the Assignment view, the color effect panel appears in the wrong position
- Fixed an issue for LT100 light towers where the Video Lighting - "Select Monitor to Capture" drop-down menu was incomplete when opening iCUE in the default window

- Fixed an issue for iCUE LINK LCD where iCUE crashes after updating and rotating the LCD
- Fixed an issue for iCUE LINK H150i RGB “White + Upgrade LCD kit v2 – iCUE” in which the device wasn’t responding after clicking "Rotate" button more than two times
- Fixed an issue for H150i ELITE LCD XT where Screen Setup (Clock) - The "24-Hour Time" toggle could be triggered from the outside
- Fixed an issue for Elite Capellix XT series where the device was shown in the wrong color in Murals
- Fixed an issue for iCUE LINK XG7 RGB where the wrong device type was shown on the Software Updates tab in iCUE Settings
- Fixed an issue for Commander Core where the wrong image description of Commander Core was shown on the Software Updates tab in iCUE Settings
- Fixed an issue for iCUE LINK System Hub where after capturing a screenshot, the LED order was frozen
- Fixed an issue for the iCUE LINK XD6 ELITE LCD where the generated image was missing for the white case color after choosing it
- Fixed an issue for iCUE XD5 ELITE where iCUE was showing the wrong device type in the description
- Fixed an issue for iCUE LINK 5000T RGB where the device could not be resized vertically after selecting "Reset Murals"
- Fixed an issue for iCUE LINK XG3 HYBRID where the wrong device type was shown
- Fixed an issue for 9000D where the Logo LED orientation did not match in the iCUE playback
- Fixed an issue where the wrong image was displayed for iCUE LINK XD6
- Fixed an issue in Murals where the wrong image for the LS Aurora Series strip was shown in the Devices list
- Fixed an issue for iCUE LINK SYSTEM HUB ADAPTER where after choosing the "Other RGB Device" from the setup channel, the device name was not changed properly
- Fixed an issue for iCUE LINK SYSTEM HUB ADAPTER where the image appeared incorrectly when converting through the “Other RGB Device” option
- Fixed an issue for iCUE LINK SYSTEM HUB ADAPTER where when using the LC100 and running the wizard, an incorrect hint was shown in step three
- Fixed an issue for iCUE LINK SYSTEM HUB ADAPTER in the QL/LL RGB Series Fans - Lighting Effects tab for the “Pong” effect, where the color options panel opened when clicking outside the color circle buttons
- Fixed an issue for iCUE LINK SYSTEM HUB ADAPTER where incorrect device images were shown in the Lighting Setup Wizard screen
- Fixed an issue for iCUE LINK SYSTEM HUB ADAPTER where, when running the setup wizard, the close ("X") button for the iCUE window was highlighted upon hover
- Fixed an issue for iCUE LINK SYSTEM HUB ADAPTER where the “Other RGB Lighting” option was missing the “All connected cables will be combined into one Strip” label in the Lighting Setup tab
- Fixed an issue for iCUE LINK SYSTEM HUB ADAPTER and 9000D where the device name overlaid the eye icon in the device list
- Fixed an issue for iCUE LINK SYSTEM HUB ADAPTER where some devices were missing from the Lighting Channel Setup tab
- Fixed an issue for iCUE LINK SYSTEM HUB adapter and 9000D in the Lighting Effects tab where no hint was shown when hovering over a shortened name

- Fixed an issue for iCUE LINK SYSTEM HUB ADAPTER and LS Aurora Series, where, after making a "Multi Selection" and using "Set to the original size," the three-dot menu disappears
- Fixed an issue for iCUE LINK SYSTEM HUB in the Lighting Setup Wizard where, when hovering over the device, the hint for the device name appeared in the wrong position
- Fixed an issue for iCUE LINK SYSTEM HUB ADAPTER where while setting up the LL/QL fans, the label showed the "missing <Device\_name>" value
- Fixed an issue for iCUE LINK SYSTEM HUB ADAPTER where the generic RGB lighting strip had a suffix in Murals
- Fixed an issue for iCUE LINK SYSTEM HUB ADAPTER and LC100 where, when using 17 parts in some layouts, the Change to "Show Whole Device" button did not work as expected
- Fixed an issue for iCUE LINK SYSTEM HUB ADAPTER, Aurora RG Strips, and Murals where the device could not be resized vertically and horizontally when staying in the default size
- Fixed an issue for iCUE LINK SYSTEM HUB ADAPTER and LC100 where, when setting the maximum parts and rotating, the image in the assignment view overlapped other screen elements
- Fixed an issue for iCUE LINK XC7 ELITE LCD where selecting the device in the Home screen immediately after it was detected caused iCUE to crash
- Fixed an ASUS Armoury Crate conflict with iCUE RAM detection
- Fixed an issue for the AX1600i where the Device Settings OCP Labels were not sequential
- Fixed Localization and Translation errors

## **Known Issues:**

### **MAKR 75:**

- after adding two images in Device Memory Mode (DMM) and toggling on the DMM toggle, iCUE crashes
- iCUE will crash after switching a device to wireless mode, allowing it to enter sleep, and then selecting another device
- after making changes on the Screen tab, then selecting a different tab without saving, clicking the "Discard" button on the "Discard Changes" popup causes iCUE to freeze
- When using the LCD module and saving a Hardware profile, iCUE allows itself to be closed, which causes it to crash
- With the device in wired mode, if a new screen effect is added without saving, then the device is disconnected and Device Memory Mode is toggled quickly, iCUE crashes
- With Device Memory Mode toggled off, disconnecting the device while the "Discard Changes" modal popup is displayed causes iCUE to crash
- While the device is in wireless mode, toggling Device Memory Mode on, then adding widgets to the screen and then turning the device off causes iCUE to crash
- Information shown on the LCD freezes when using the Fn shortcuts while iCUE is running

### **Xeneon Edge (releasing this summer):**

- If the LCD is set to Duplicate mode, there is no way to regain control without closing iCUE

## **iCUE 5.27.149**



## **What's New:**

- Implemented FlashTap support for K70 RGB PRO, K70 CORE RGB, K70 CORE RGB TKL, and K70 MAX RGB

## **Bug Fixes:**

- Resolved an issue where iCUE did not record the key assigned after dragging and dropping it from the library to a button in assignment view
- Resolved an issue in Software Profiles Settings where blank tooltips appeared upon hover
- Resolved an issue where the Software Profile Settings menu would automatically close after leaving the editing screen
- Resolved an issue for Software Profiles Settings where duplicating a profile within a folder resulted in a profile icon that was too large
- Resolved an issue for the Software Profile Settings where the default profile, if it was located in a folder, lacked a "Home" badge
- Resolved an issue where the ON/OFF toggle for iCUE SDK could be clicked through the info tooltip
- Resolved a UI issue where there was a large amount of space between the colors in the color selector for profile icons
- Resolved an issue where the "Don't show this again" checkbox was still selected after performing the "Don't show this again" reset
- Resolved an issue where the "New: Welcome Plugins" banner was missing after pressing the "Home" button
- Resolved an issue with iCUE Murals where the "Edit Media" buttons were disabled if no custom image/video was selected
- Resolved an issue with iCUE Murals where a Murals effect was turned off after an image/video assigned to another effect was deleted
- Fixed a UI issue for iCUE Murals where the "eye" icon overlapped with a device's name
- Resolved an issue for iCUE Murals where the device was still selected after using the "Send to Back" function
- Resolved an issue for iCUE Murals where the text "Temporary Unavailable" did not fully show in its box
- Resolved an issue with iCUE Murals where the Stream Deck software did not update when editing Brightness and Saturation
- Resolved an issue where the "restart required" tooltip did not show up after removing the NVIDIA plugin while using both the NVIDIA and GIGABYTE plugins
- Resolved an issue where there was an overlap for some devices in Lighting Setup
- Resolved an issue where no tooltip appeared when hovering over the "Screen Duration" text box for Screen Setup
- Resolved an issue where the "Context Menu Options" function appeared multiple times
- Resolved an issue for Key Assignments where the clickable area for the "Execute Uninterrupted" checkbox was too large

- Resolved an issue where the “Custom Screen” effect with the Screen Setup settings tab was missing the preview panel for the “YouTube/Web URL” effect
- Fixed an issue with the Screen Setup for Hydro Cooler LCDs in which the “Web URL” effect did not correctly display the webpage
- Fixed an issue for Screen Setup for Hydro Cooler LCDs where the “Web URL” effect did not display the webpage preview while using “Custom Screen List”
- Fixed an issue for Screen Setup for Hydro Cooler LCDs where the “Web URL” effect was missing from the assignment view
- Resolved an issue for Screen Setup for Hydro Cooler LCDs where the “Web URL” effect was missing the “Zoom slider” feature
- Resolved an issue for the Screen Setup for Hydro Cooler LCDs for the “Web URL” effect where iCUE did not automatically update the assignment view while disconnecting the internet
- Resolved an issue for Screen Setup with Hydro Cooler LCDs where the “Web URL” effect thumbnail was distorted
- Resolved an issue for Screen Setup for Hydro Cooler LCDs where the “YouTube” effect was missing the “YouTube” icon on both the view and on the physical device
- Resolved an issue for Screen Setup for Hydro Cooler LCDs where the “YouTube” effect where there was no hint tooltip after hovering over the text box
- Resolved an issue for Screen Setup for Hydro Cooler LCDs where the “YouTube” effect was missing the ability to right-click the text box for sub-functions
- Resolved an issue related to DRAM where the sensor for DRAM was shown incorrectly on the “Home” page
- Resolved an issue for the Void Elite series where, after enabling sidetone, sidetone did not work after muting and unmuting the mic
- Fixed an issue for the VOID WIRELESS V2 where a lighting link effect could not be played
- Fixed an issue for the VOID WIRELESS V2 where a Murals Custom effect could not be applied to the device after powering on
- Fixed an issue for the VOID WIRELESS V2 where the “Maximum Lighting Layer” warning header was shown incorrectly
- Fixed an issue for the VOID WIRELESS V2 and VIRTUOSO MAX WIRELESS where the text “Your device is currently in Device Memory Mode” did not fit within the box
- Fixed an issue for the VIRTUOSO MAX WIRELESS where the warning “Maximum of Assignments” could not be closed through clicking outside of the box, and the header bar was not usable
- Fixed an issue for the VIRTUOSO MAX WIRELESS and HS80 RGB WIRELESS where, after re-unlocking the screen, the “USB WL receiver paired” wizard was shown in black, and the device settings feature was frozen
- Fixed an issue for VIRTUOSO MAX WIRELESS where the “Critical Battery Status” banner was displayed even when device was off and the battery was “Unavailable”
- Resolved an issue for Keyboard Macros where the Mouse event “Double Click” could not be added
- Fixed an issue for the LC100 where the Color Warp effect was missing after quitting iCUE
- Fixed an issue for the Commander Core XT where the device images in the Lighting Setup 4-pin wizard were missing

- Fixed an issue for the LT100 where the Quick Lighting Zone was displayed outside of the image
- Fixed an issue for the iCUE LINK H100i RGB where the "Audio Lighting" effect did not work when Murals (Audio Lighting) was activated on another device
- Fixed an issue for the iCUE LINK SYSTEM HUB, which showed out-of-bounds in the Murals tab after setting the long name for this device.
- Fixed an issue for iCUE LINK SYSTEM HUB where the message "Here are your iCUE LINK System Hub Ports" was displayed in the wrong language
- Fixed an issue for RGB LED STRIPS connected to the iCUE LINK SYSTEM HUB adapter where the device could not be resized vertically after selecting "Reset Murals"
- Fixed an issue for the iCUE LINK XD5 ELITE where the display LED was misaligned in Assignment View
- Resolved an issue where the Zero RPM preset did not work for some coolers
- Fixed an SCUF ENVISION notification that overlapped the "Help" video

## **iCUE 5.26.97**

### **What's New:**

- Implemented two new widgets for Hydro Cooler LCD screens: a Web URL widget that displays a webpage and a YouTube widget that enables playback of YouTube videos
- Implemented FlashTap support for 70 PRO TKL MGX and K70 CORE TKL WL

### **Bug Fixes:**

- Fixed an issue that caused iCUE to crash after deleting a folder filled with profiles
- Fixed an issue that sometimes caused iCUE to crash during system shutdown or sleep, potentially causing improper hardware lighting to be saved to the iCUE LINK System Hub
- Fixed an issue that caused high CPU usage and freezing of iCUE on macOS (MacBook Pro with M4 Pro chip) after exiting sleep mode
- Fixed an issue in which the Copy (Ctrl + C), Paste (Ctrl + V), and Delete (Del) shortcuts for the alert layer were not functioning properly
- Fixed incorrect text in the "Delete Module" popup that appears when uninstalling a plugin
- Fixed an issue that after discarding the new name for a Hardware Profile, iCUE automatically saves the new name
- Fixed an issue for plugins in which the hint and restart buttons did not work after installing/removing a plugin
- Fixed an issue that prevented iCUE from using the "Snap windows" function
- Fixed localization and translation errors
- Fixed an issue that the LCD Wizard button doesn't appear in Device Settings when a system has two connected iCUE Link LCD cooling devices

- Fixed an issue in which the Hydro Cooler LCD Screen Constructor Effect is missing the Reset Button near the text field
- Fixed an issue for the Hydro Cooler LCD in which the screen sensors vanished after a change in configuration or restart
- Fixed an issue for iCUE LINK System Hub in which no index numbers showed up when connecting two devices of the same type to the Hub
- Fixed an issue for iCUE LINK TITAN Coolers LCD that while running the Fans Setup Wizard from the Home screen, the LEDs were missing from the FAN
- Fixed an issue for the ENVISION PRO in which remapped buttons don't function properly when iCUE is open
- Fixed an issue for some Govee devices in which the assignment view for an unreachable device and the notification for an unreachable device do not appear when they should
- Fixed an issue for 5000T in which the Synchronize Case Lighting feature does not work properly while using the Watercolor lighting effect
- Fixed an issue with Virtuoso MAX Wireless in which the device, despite having a critical low battery, improperly played the Murals effect
- Fixed an issue for Virtuoso MAX Wireless in which all Hardware profiles can't be cleared
- Fixed an issue in which "Active Noise Cancellation" doesn't function properly in the Dashboard for the Virtuoso MAX Wireless widget
- Fixed an issue with the Virtuoso MAX Wireless in which changing the microphone volume and then turning the device off and back on caused it to save the incorrect microphone volume
- Fixed an issue in which the "Speedometer" function for supported mice does not work properly after performing Tilt Calibration/Surface Calibration

## **iCUE 5.25.97 Release Notes**

### **Announcements:**

Starting with this most recent release of iCUE, we are reworking how our release notes are provided to you throughout the next couple of releases. We hope you enjoy these changes!

### **Bug Fixes:**

- Fixed Localization and Translation errors
- Resolved an issue that caused iCUE to be uninstalled after a Windows Update
- Fixed an issue that caused iCUE to refuse to let the system sleep while the software is open
- Fixed an issue that caused multiple instances of the Settings tab to open when running a product's setup wizard
- Fixed an issue that caused iCUE to crash after updating any device firmware and clicking the device's image at the same time

- Fixed an issue in which Quick Lighting Zone and Lighting Element are still shown after closing the Lighting Type area
- Fixed an issue where Quick Lighting Zone was not automatically selected after choosing a Lighting Effect from the Lighting Library
- Fixed an issue that caused the Murals panel to appear twice in the Lighting Effects tab
- Fixed an issue that prevented the Murals Creation Wizard from opening
- Fixed an issue for NVIDIA Plugin in which the Murals indicator was missing after applying a Murals effect
- Fixed issue in which Asus Aura Sync Plugin stopped working after installation and uninstallation of iCUE
- Fixed an issue in which a folder name was not changed after renaming it in Software Profile Settings
- Fixed an issue for VIRTUOSO MAX WIRELESS that caused iCUE to crash when saving a hardware profile while running out of battery
- Fixed an issue for VOID ELITE WIRELESS that caused audio to stop playing while running iCUE on MacOS
- Fixed an issue for SCUF Envision that prevented the "unavailable" state from displaying in the Murals tab
- Fixed an issue for K65 PLUS WIRELESS where the Murals Lighting panel appears in the lighting effects panel when the keyboard is in wireless mode.
- Fixed an interface issue for Slipstream Wireless Dongle Setup
- Fixed an issue for K70 MAX that caused the first and secondary actions to disappear when reassigning the actuation key via drag-and-drop
- Fixed an issue for XC7 Elite LCD in which the Murals effect applied doesn't show after quitting and restarting iCUE.
- Fixed an issue for iCUE LINK System Hub in which lighting was missing in both iCUE and on the physical device when changing the position of iCUE LINK XG7 RGB
- Fixed an issue when LX RGB fans don't spin with the correct speed when XD5 Hydro X cooling curve is assigned in Device Memory Mode
- Fixed a Device Memory Mode issue that caused all the events recorded within Macro Assignment or the Key Assignments list to be deleted when a Macro Assignment had too many events
- Fixed an issue that caused detection issues with iCUE LINK Hub
- Fixed an issue for iCUE LINK RGB Hub in which users were unable to drag and drop the LC100 triangles
- Fixed an issue for iCUE LINK RGB Hub in which users were unable to create a lighting effect by using the drag-and-drop in the assignment view
- Fixed an issue for iCUE LINK RGB Hub in which users were unable to share the SDK lighting through the hub
- Fixed an issue for Govee products in which the "Temporary Unavailable Devices" message in the Murals tab is missing when the device is off

- Fixed an issue for Govee products in which the lighting did not light up on the physical device after putting the device image into the lighting zone
- Fixed an issue for Govee products that caused part of the Settings tab to disappear after locking and unlocking the screen

## **iCUE 5.24.57 Issues Resolved**

### **Software Enhancements**

- Resolved a visual issue in which the Popup Navigation Menu would overlap with the iCUE Home screen
- Resolved an issue that caused the "Check for Update" button to disappear after removing plugins
- Resolved an issue that caused a profile to still appear in "Profile Switching" after deleting its parent folder

### **HID Product Enhancements**

- Implemented a Rapid Trigger customization menu with keyboards that support Game Mode
- Resolved an issue that caused iCUE to crash after assigning a second assignment with Text Action
- Resolved an issue that caused iCUE to crash after adjusting brightness while changing the polling rate of a device
- Resolved an issue that caused iCUE to crash when deleting DPI Presets in a new profile
- Resolved an issue that caused iCUE to crash after selecting "Retain Original Key Output" and "Execute Uninterrupted" simultaneously
- Resolved an issue for Sabre RGB PRO Wireless that caused iCUE to crash after adding an Assignment List to the Hardware Assignment Library
- Resolved an issue for SCUF Envision PRO in which the Lighting Link effect would not apply to the device
- Resolved an issue for SCUF Envision PRO in which a second Mapping Action cannot be created after one was created
- Resolved an issue for SCUF Envision PRO in the info popup 'Third-party app exclusive rights block iCUE actions,' blocked the user from clicking on top of the home screen

### **DIY Product Enhancements**

- Implemented new capabilities for the iCUE LINK Setup Wizard (e.g., Supports 2 Pumps on setup, Additional Notifications, Reworked Fan Setup)
- Resolved an issue for iCUE LINK LCD screens not showing sensor names on initial setup
- Resolved an issue that caused iCUE to crash when attempting to enumerate devices while downloading an update

## **iCUE 5.23.96 Issues Resolved**

### **Software Enhancements**

- Resolved an issue that made it difficult to 'restore normal operation' after an alert was triggered from a Hydro Series cooler
- Resolved various translation issues with notifications
- Resolved an issue that prevented certain toast notifications from appearing for Govee H6061
- Resolved various text issues with Govee products
- Resolved an issue that caused sensors to display incorrectly on the Dashboard
- Resolved an issue with iCUE MacOS that prevented Video Capture effects from playing
- DRAM sensors will now display properly after waking the system from sleep or hibernation

#### **HID Product Enhancements**

- Resolved an issue that caused iCUE to crash when starting the pairing process simultaneously with a macro
- Resolved an issue that prevented the deletion of a hardware profile while in Device Memory Mode (DMM)
- Resolved an issue with Text assignment playback on keyboards with different regional layouts
- Game Mode is now its own tab on the device screen instead of in Device Settings
- Resolved an issue with VIRTUOSO MAX that caused Scroll Up and Down remaps to work improperly
- Resolved an issue that prevented the wireless icon from appearing properly for the HS70 PRO Wireless
- Resolved a battery status on the Dashboard with VIRTUOSO MAX that prevented it from syncing with Device Settings

#### **DIY Product Enhancements**

- Resolved an issue that prevented certain iCUE LINK products from saving their layouts properly in Murals
- Resolved an issue that caused the Lighting Setup Wizard to hang when using it with an iCUE LINK Adapter

## **iCUE 5.22.86 Issues Resolved**

#### **HID Product Enhancements**

- Resolved an issue that caused the forward and back buttons on some mice to behave as a toggle instead of a single key press

## **iCUE 5.22.81 Issues Resolved**

#### **Software Enhancements**

- Resolved an issue that prevented the installation of the NVIDIA Broadcast plugin
- Resolved an issue with Launch Application that prevented proper scaling of the icons for the linked application

- Resolved an issue with Murals that prevented the Reset Image button from applying as expected

#### **HID Product Enhancements**

- Resolved an issue that crashes iCUE when changing the brightness with the K100 RGB Control Dial while simultaneously changing the polling rate
- Resolved an issue that caused iCUE to crash when pairing KATAR PRO Wireless
- Resolved an issue with Envision Wireless when Device Memory Mode is enabled
- Resolved an issue with K70 RGB TKL brightness configuration in Game Mode
- Resolved an issue with shortcuts not working properly while the device is in Device Memory Mode after saving a profile to the onboard storage
- Resolved an issue that prevented the pairing process from completing successfully for K70 RGB TKL Wireless after a new profile is saved to the onboard storage
- Resolved some text runoff issues with VIRTUOSO MAX
- Resolved various issues when using iCUE Murals with VIRTUOSO MAX
- Resolved an issue that improperly showed the Sidetone and Mic Volume at 100% volume after enabling Dolby Audio for certain headsets

#### **DIY Product Enhancements**

- It is now possible to use two HydroX LCD Pumps together in iCUE with one iCUE LINK Hub
- Resolved an issue that prevented configuration of an XD5 ELITE when used together with a XD5 ELITE LCD

## **iCUE 5.21.107 Issues Resolved**

#### **Software Enhancements**

- iCUE will now create a backup for profiles before an update. This allows users to roll back to a previous software version (if necessary) without any data deletion and will be done automatically during the installation process. Backup files can be found here:  
Windows: C:\Users\<user name>\AppData\Roaming\Corsair\CUE Backup  
macOS: /Users/<user name>/Library/Application Support/Corsair/CUE Backup
- Updated CPUID SDK to the latest version
- Resolved an issue that prevented "All" from selecting all devices when used with library lighting
- Resolved various issues that may cause a crash when clicking on an unavailable device
- 'Set to Original Size' in iCUE Murals will now be disabled if the device is already at its default size
- Resolved an issue that prevented ASUS ROG STRIX Z790-F from appearing as a device in iCUE
- Govee H6061 will now properly show as a device in the iCUE Murals tab
- Resolved an issue that shows a Govee device being active in iCUE Murals even though the device state is off

#### **HID Product Enhancements**

- SCIMITAR ELITE RGB Brightness slider is now fully fixed with only on and off values for the slider



- Resolved an issue with K100 RGB that prevented the Media Control Wheel from working properly in software mode
- Resolved an issue with K70 CORE series that prevented the Winlock key from being disabled if toggled under the Performance tab
- Resolved various issues with the Key Actuations tab related to text overlap and missing translations

#### **DIY Product Enhancements**

- Resolved an issue with Constructor screen effect that prevented values from updating properly in the text field after renaming the sensor
- Resolved various text errors with iCUE LINK TITAN series coolers
- The cooling preset will no longer change for iCUE LINK TITAN series coolers after updating the firmware for the LCD
- Resolved an issue that prevented dragging and dropping images for device reordering after a firmware update to the iCUE LINK Hub
- Resolved an issue that prevented iCUE LINK Fans from lighting all of their LEDs

## **iCUE 5.20.89 Issues Resolved**

#### **Software Enhancements**

- Resolved an issue that caused the initial launch of macOS iCUE to be off-centered
- Resolved an issue with sensor logging being saved to a different directory than the one indicated in Settings
- Resolved various minor issues with Murals with zooming and scrolling
- Resolved some translation errors with Device Memory Mode notifications

#### **HID Product Enhancements**

- Resolved an issue with Mic Boost displaying "%" instead of "dB"
- Added a notification to alert the user when Macro recording for Device Memory Mode exceeds 256 events
- Resolved an issue with K70 MAX that would crash iCUE when the polling rate is changed while Macro Record is active

#### **DIY Product Enhancements**

- Improved the performance when changing fan speeds based on PWM curves for iCUE LINK devices
- Added additional customization options for the Constructor screen effect on LCD-based devices

## **iCUE 5.19.104 Issues Resolved**

#### **HID Product Enhancements**

- Resolved an issue with importing EQ presets from previous iCUE versions
- Resolved an issue with the Brightness slider for Scimitar RGB

## **iCUE 5.19.101 Issues Resolved**

### **Software Enhancements**

- Resolved an issue that prevented Gigabyte motherboards from showing up properly
- Resolved an issue that caused a memory leak with Murals lighting effects
- Added H61B5 RGBIC LED Strip lights to expand Govee support
- Resolved an issue that prevented users from deleting custom videos added to Video Capture
- Resolved an issue that prevented Force Update for certain devices that required a USB cable to be attached prior to starting the process
- Resolved an issue with German localization that caused text overlaps
- Resolved an issue that prevented higher polling rates to be selected for K60 PRO TKL RGB
- Resolved an issue that caused a crash when users create a profile after changing the polling rate for K70 CORE RGB
- Resolved an issue that prevented Govee sub-functions such as Clear and Paste from working properly
- Warning messages for Govee support are now localized
- Reverting to the original size for Govee devices will no longer cause an image loss
- Resolved various Govee issues with Murals

### **HID Product Enhancements**

- Updated SoundID to the latest SDK
- Resolved a rare issue that caused a crash when using pre-existing DPI Hardware profiles
- Devices with Power Saving Mode enabled will no longer show up in Murals due to this setting disabling lighting to conserve power
- ST100 and M700 products will no longer lose their lighting zone assignments during LT100 configuration

### **DIY Product Enhancements**

- Added legacy product support for the iCUE LINK ADAPTER
- Improved the Lighting Setup Wizard for iCUE LINK products – users will now be able to stop the selected fan from spinning to easily identify the device for configuration
- iCUE LINK XC7 ELITE LCD will now properly show up under the iCUE LINK SYSTEM HUB list
- Resolved an issue that prevented toast notifications from appearing for LS100 Starter Kit
- Resolved an issue that prevented Time Warp from saving after clicking the "Discard" button
- Resolved an issue that prevented Device Memory Mode from saving changes after clicking on the "Revert Control" button in Murals for iCUE LINK devices
- Resolved an issue that caused cooling presets to automatically move to the top of the list after a search
- Made improvements to reduce CPU resource consumption when using the Constructor Effect

- Hydro X Cooling presets are now available in Device Memory Mode
- Various user interface improvements have been made for Aurora LED Lighting Strips
- Resolved an issue that removed custom presets for the iCUE LINK RX Fan series
- Resolved issues that caused graphical overlaps for LS100 in the Lighting Setup tab
- Dominator RGB lighting will no longer be disabled in Murals after restarting iCUE
- Resolved an issue that caused lighting effects for DRAM to stall when putting the PC to sleep

## **iCUE 5.18.106 Issues Resolved**

### **Known Issues**

- We have made significant progress with the Gigabyte motherboard detection and will have the updated plugin to share soon
- Due to enhancements made to iCUE, users using the CORSAIR RGB Memory Plugin for ASUS AURA SYNC will need to update to the latest version (v2.2) – you can find this plugin under the subcategory "iCUE" at <https://www.corsair.com/downloads>
- Some versions of SCIMITAR RGB may not display lighting correctly due to incorrect slider values for Brightness – for those users who are affected, a workaround can be done by moving the slider to the "33%" – this will re-enable the lighting for you while we fix this in the next version

### **Software Enhancements**

- Flintlock has been added to the iCUE Game Integrations profile folder
- Resolved various crashes that occurred when recording a macro
- Resolved an issue that prevented multiple colors from being saved onto certain devices in Device Memory Mode
- Resolved an issue that prevented "Select App to Launch" from working properly
- Govee setup will now properly show the "No Connection" warning when no internet connection is found
- Resolved an issue that may cause the software to time out when clicking the Settings icon for Govee
- Resolved an issue that prevented the deletion of a Custom Video effect in Murals
- The Plugins tab now has an Update All button available

### **HID Product Enhancements**

- Resolved an issue that prevented DPI from being saved to some mice in Device Memory Mode
- Resolved an issue that prevented Audio Visualizer from playing its lighting effect properly
- Resolved an issue with LT100 that causes user interface problems when using the setup wizard on a 2K monitor

### **DIY Product Enhancements**

- User Profiles for the Performance Memory Manager can now be deleted
- Resolved an issue that prevented the display of the full name with GPU Temp #1 when used with the Constructor screen effect
- Resolved an issue that causes the values to disappear when right-clicking on the search bar
- The scroll bar will no longer be lost when switching between the Cooling tab and other device tabs
- Resolved an issue that causes the graph to overlap the temperature value in sensor widgets
- Sensor names for Dual Bar and Constructor will no longer be missing after creating a new profile
- Sensor dropdown will no longer be blank when creating a new preset LCD screen effect
- Resolved an issue with the Case Color dropdown for XC7 ELITE LCD
- Resolved various issues that caused flickering while using the Lighting Setup Wizard for iCUE LINK devices

## **iCUE 5.17.110 Issues Resolved**

### **Known Issues**

- We are aware of reports related to the Gigabyte Plugin not properly detecting motherboards in iCUE and we are investigating this issue with Gigabyte
- iCUE may not detect DDR5 modules after installation for some user. In some cases, reinstallation of iCUE may resolve the issue – we are researching the root cause of this issue to provide a permanent resolution

### **Software Enhancements**

- We have resolved multiple issues that may cause iCUE to crash on startup. We apologize for the inconvenience and will determine how to prevent profile data loss in the future when updating iCUE

## **iCUE 5.17.104 Issues Resolved**

### **Software Enhancements**

- Resolved an issue that caused Cooling and Alert tabs to be missing on NVIDIA RTX devices

- Due to the changes implemented in iCUE's backend support, users will need to update their Stream Deck plugin – updates for the plugin will also resolve various issues including action assignments and iCUE LINK device detection
- Resolved an issue with Govee that prevented right-clicking to change the name in the Device Settings tab
- Removed aspect ratio selection for Murals to improve the Murals setup experience
- Resolved an issue that prevented any "Press Dial" features from triggering on press
- Resolved issues that caused the download progress bar to disappear while updating new modules
- Resolved an issue that may prevent notifications from appearing after clicking on an info button
- Deleting the Govee plugin will no longer cause issues with the Device Settings tab

### **DIY Product Enhancements**

- We have expanded the customization of our LCD screens for Hydro Coolers by allowing our users to overlay sensor data over any custom background
- Resolved an issue with 5000T RGB that caused lighting effects selected on a 4-pin channel to also play on the 3-pin channel
- HydroX cooling presets are now available in Device Memory Mode
- Resolved an issue that prevented preset fan curves from saving in iCUE after a software restart
- Resolved an issue that prevented the "Set LCD Frame Rate" slider from appearing properly
- Arc lighting effect now properly plays on SP120 PRO and SP120 ELITE series fans
- Resolved an issue with all cooling devices that prevented drag and drop from the cooling library
- Resolved an issue that caused software-enabled lighting effects to appear under Device Memory Mode
- Users will no longer be able to accidentally quit iCUE during any Setup Wizard process
- Resolved an issue with COMMANDER CORE not importing and exporting profiles properly

### **HID Product Enhancements**

- Assignment buttons will no longer be disabled when unplugging a separate HID device
- Resolved an issue that caused problems with key assignments after a firmware update
- iCUE will no longer crash after changing lift height in Device Memory Mode
- Resolved an issue that prevented K95 RGB PLATINUM from displaying indicators if the brightness was set to 0%
- Resolved an issue with switching DPI stages on wireless mice after completing a new pairing process
- Resolved an issue with K70 MAX when using tournament mode with Device Memory Mode
- Resolved an issue with VIRTUOXO XT that caused mic boom LED issues when leaving the connectivity range of the receiver

## **iCUE 5.16.75 Issues Resolved**

### **Software Enhancements**

- iCUE now officially supports the detection of Gigabyte motherboards for RGB lighting control. This plugin will support the latest chipsets from AMD and Intel as well as their respective last-generation chipsets. To enable this feature, go to Settings > Plugins, then click the install button to the right of 'Gigabyte Plugin'
- The following devices have been added for Govee Support:
  - H61C2, H61C3, HC165
- Resolved a rare issue that causes the 'Restart Now' and 'Retry' buttons to be inoperable
- Updated the background image for the "Monitor Screen" effect in iCUE Murals to improve usability
- Added additional "Don't show it again" checkboxes for notifications related to third-party applications
- Resolved various user interface issues when iCUE is in different languages
- Resolved an issue that prevented the clicking of 'Pairing Reset' when too long of a name was used for the device
- Updated the driver for SCUF ENVISION and ENVISION PRO that prevented the controller from working properly in certain XBOX games

### **HID Product Enhancements**

- Resolved an issue with certain keyboard models that prevented the assignment of key bindings after a forced firmware update
- Resolved some Device Memory Mode issues with GLAIVE and GLAIVE PRO

### **DIY Product Enhancements**

- Resolved an issue that showed a blank screen option for default LCD screens
- Resolved an issue that prevented the 'Shutdown PC' alert for systems with NVIDIA 3000 series GPUs
- Improved the performance of iCUE when there are 24 devices connected to the iCUE LINK HUB

## **iCUE 5.15.117 Issues Resolved**

### **Software Enhancements**

- Resolved an issue that prevented firmware updates from starting during the prompt for a USB cable to be connected
- Resolved an issue that prevents the border around the Macro Recording area from blinking during a macro recording session
- Voicemod SDK is updated to the latest version – however, "Instant Censor Beep" and "Mute for Me On/Off" are temporarily disabled until they are re-implemented in the SDK
- iCUE will no longer fully quit while there is an active window prompt
- Improved the design for progress bars and their associated buttons
- Modules can no longer be deleted for devices that are still connected to the system

- Resolved an issue that caused temperature units to be displayed in Fahrenheit instead of Celsius by default
- iCUE will no longer crash while switching profiles during a pointer hover on an icon in Key Assignments
- Profile names will no longer be allowed to exceed 255 characters
- Info panels in Device Memory Mode will no longer have a text cut-off
- Resolved some user interface issues that caused improper scaling in some of the device panels
- Resolved an issue that causes iCUE to hang during the saving process of a hardware profile
- The following devices have been added for Govee Support:
  1. H610A Light Strips
  2. H61E1 Light Strips
  3. H61D3 Light Strips
  4. H6065 Y Light Bars
  5. H6047 Light Bars

#### **HID Product Enhancements**

- Additional notifications were added when saving multiple hardware profiles to a device
- A notification has been added for devices that are out of space while saving a hardware profile
- Added some improvements to Device Memory Mode to help with discarding changes
- Improved the notification(s) shown in iCUE macOS for a headset's first detection in iCUE
- Pointer Speed and Enhance Pointer Precision have been removed for mice – users should enable/disable these features now through Windows Control Panel for pointer devices
- Resolved a rare issue that caused Lighting Layers and/or Key Assignments to disappear after changing DPI settings and saving the hardware profile

#### **DIY Product Enhancements**

- Various issues were resolved with Device Memory Mode while saving images to LCD-supported devices
- Switching profiles will no longer cause a lighting effect to be stuck for iCUE LINK ecosystem devices
- Updated the HX1200i image to properly reflect the actual device

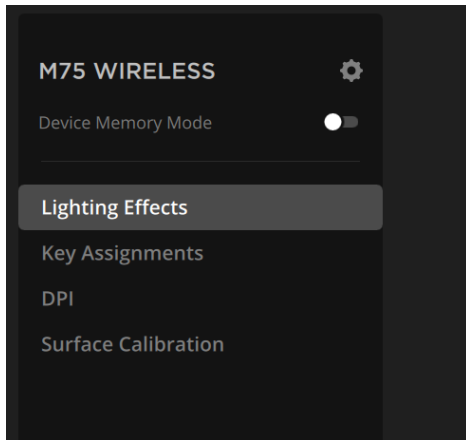
## **iCUE 5.14.78 Issues Resolved**

Note: 5.13 was never released to public due to the large number of changes – it is expected to update from v5.12.97 directly to v5.14.78

#### **Software Enhancements**

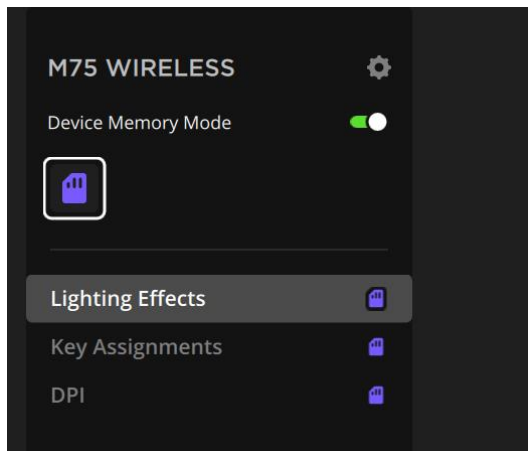
- One of the newest features (and changes in the user interface) is the implementation of Device Memory Mode

## Hardware



Device memory mode allows a product to be utilized in iCUE in the 'hardware state'. Previous iterations of iCUE require you to quit iCUE in order for a device to work in the hardware state. Hardware states for our devices allow for device behavior without a dependency on iCUE running in the background. Examples of hardware states include the color of lighting on your Fans and Coolers under 'Hardware Lighting' or Hardware Key Assignments for your mouse and keyboard.

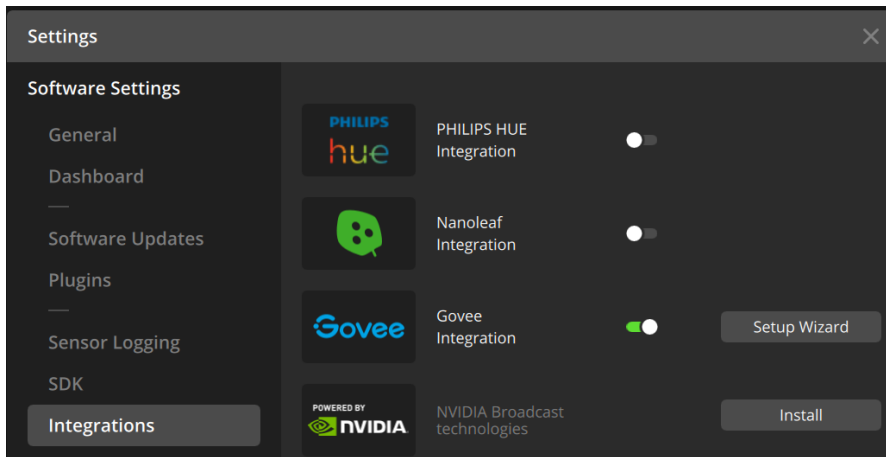
When users enable Device Memory Mode, you will now be able to customize your device with the same hardware configurations without needing to quit iCUE to view your changes. It also allows users to configure their devices with an emphasis on making it easier to view and save your changes.



Device Memory Mode does not change what options (and their limitations) in the hardware state but this should allow users to manage their configurations in a clearer and more accessible method.

- iCUE now supports a limited number of Govee products. This feature is still in beta but allows users to detect and control Govee products in iCUE to synchronize with all iCUE-compatible devices. Features like per-LED lighting and iCUE murals are compatible with Govee devices in the iCUE ecosystem. This feature can be found in Settings > Integrations:





The following products are supported in our initial beta of Govee support:

- H619A - 5m
- H619B - 7.5m
- H619C - 10m
- H619D - 27.5m
- H619E - 210m
- H619Z - 3m

- H61A0 – 3m
- H61A1 – 2m
- H61A2 – 5m
- H61A3 – 4m
- H61A5 – 10m

- H61C3 – 3m
- H61C5 – 5m
- H61C2 – 2m

- H6061

- Viewing profiles no longer are collapsable – they are now shown vertically for easier edits

- Viewing profiles no longer are collapsable – they are now shown vertically for easier edits
- CPUID SDK is updated to the latest version
- HARPOON PRO will now properly show up as a device in Murals
- Resolved some issues with modules not properly uninstalling when deleted
- Resolved an issue with the NVIDIA BROADCAST Learn More hyperlink from opening correctly
- Toggling Lighting Layers will no longer cause the selection to auto select the last layer
- iCUE LINK Hydro Coolers in White will now show the proper image in Murals

- Profile names can no longer be blank
- Any iCUE application restart notifications will now show the device associated with the request

#### **HID Product Enhancements**

- iCUE will no longer crash when changing the DPI and unplugging the mouse afterwards
- Resolved various issues with headset detection and operation with iCUE macOS
- Dragging and dropping DPI Presets from the DPI List will no longer cause iCUE to quite unexpectedly
- The debounce customization in Settings for certain iCUE keyboards will now show the correct value after configuration
- Resolved an issue that may cause errors to iCUE when deleting an onboard profile on SCIMITAR/ELITE RGB
- Adding a widget to iCUE NEXUS will no longer cause the opacity feature to disappear from background options
- Resolved an issue that prevented G-keys and Lighting Link from working properly for iCUE NEXUS

#### **DIY Product Enhancements**

- Triggered Alerts will now properly show in the applicable device tiles under the Home Page
- VENGEANCE DDR4 modules detected in iCUE will no longer cause the DDR5 version of the module to be downloaded together
- Users will now be able to use the same name on different sensors
- iCUE LINK Devices will now properly illuminate during the setup wizard
- Users will now be able to drag and drop devices during setup after a firmware update
- Resolved a text issue with LCD screen rotation in different languages
- Resolved an issue that prevented a screen from being deleted after adding it as a custom image/gif
- QX fans now have a Change Case Color so users can select the white version for the user interface
- Resolved various issues when configuring the scaling of custom images for LCD screens
- Resolved an issue that caused iCUE to quit unexpectedly after a successful firmware update to the Voyager A1600 Touch Bar and renaming of the screen

## **iCUE 5.12.97 Issues Resolved**

#### **Software Enhancements**

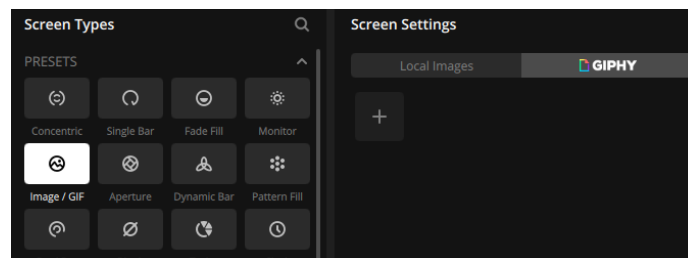
- Resolved an issue that caused iCUE to unexpectedly quit when importing a profile on a system with a NVIDIA Founder's Card GPU installed
- Battery Status sensor widgets on the Dashboard will now properly show a graph in the background
- Certain widgets will no longer be missing their context menus when added to the Dashboard
- Lighting Effects will no longer be duplicated when dragging and dropping layers in the list
- Resolved various issues with naming in Murals
- HARPOON PRO will now properly show up as a device in Murals

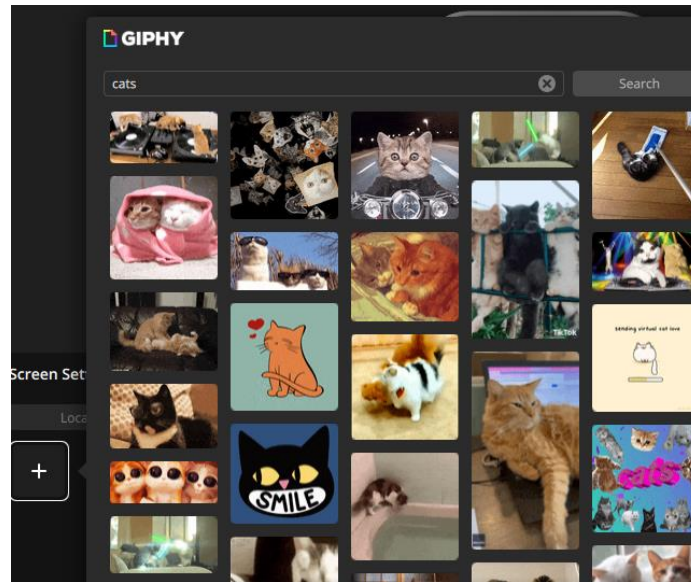
## **HID Product Enhancements**

- Resolved an issue that causes KATAR PRO WIRELESS to stop responding if the polling rate is changed to 2000 Hz
- Resolved an issue that prevented Imitate Holding Key from working properly with Hardware Key Assignments
- Resolved various issues that may cause iCUE to unexpectedly quit when changing polling rates across various devices
- Resolved various issues that caused keypress combinations from working properly with Japanese layouts on certain keyboards
- The Brightness Control icon will no longer be missing for the K100 Control Wheel
- Resolved an issue that caused K70 CORE RGB to show up as a CRP\_DISABLED device after a firmware update
- Resolved the following issues with iCUE NEXUS:
  - Background image will now display properly when using the 640x48 px window size
  - Image rescaling logic was improved
  - Profile switching issues were fixed so that all profiles will properly appear on the rotation list
  - Changing Lighting Link will no longer cause the name of the effect to disappear
  - Renaming an EQ preset will properly update the device screen

## **DIY Product Enhancements**

- GIPHY support has been added to all LCD devices – users can now browse, download, and add animated GIFs to their devices. To find this feature select 'Images/GIF' then click the 'GIPHY' tab:





- Resolved an issue that caused a delay in DDR5 detection when creating a new user profile
- Resolved an issue with VOYAGER Gaming Laptops battery widgets not updating their status properly after the charger is removed – the widget for this sensor can also now be properly added to the Home Screen
- The brightness between the keyboard and the touch bar for VOYAGER Gaming Laptops will now be properly adjusted together when using the hotkey
- An additional prompt has been added to the Performance Manager tab for DDR5
- Resolved various issues with the customization of Alerts
- Resolved a display issue when using custom fan curve names when a QX fan is connected

## **iCUE 5.11.96 Issues Resolved**

### **Software Enhancements**

- Resolved a critical issue that enables 'Enhance Pointer Precision' in Pointer options under WinOS Mouse Properties – iCUE will also no longer re-enable this option on application restart

## **iCUE 5.11.95 Issues Resolved**

### **Software Enhancements**

- iCUE will no longer crash when switching presets in Murals
- Improved tooltips for better consistency and placement in iCUE
- When Lighting Layers are toggled, the last layer in the list will no longer be auto-selected

- Naming a Murals effect with a long name will no longer cause the Go To Murals button to disappear
- Resolved an issue that causes the device image to increase in size briefly when trying to downsize
- Hovering over shortened text on a sensor in Dashboard will now properly show the full text as a tooltip
- Resolved an issue that caused graphs to still appear for sensor widgets in Dashboard even after hiding them
- Improved the responsiveness of the Color Wheel

### **HID Product Enhancements**

- Resolved an issue with French language that affected Macro – Copy Event and Macro – Delete Event
- Copying “Switching Profile” as an assignment will now be possible even without a key being assigned
- Cancelling the firmware update on Void RGB ELITE Wireless will no longer cause it to disappear from the device list
- Resolved various lighting effects issues with NIGHTSABRE, DARKSTAR, and K70 PRO Wireless
- Resolved an issue with NEXUS battery status widgets that prevented certain devices from reporting their battery levels
- A background image will now properly be displayed when a screen on NEXUS is imported

### **DIY Product Enhancements**

- Resolved an issue that affected Time Warp lighting after a device’s firmware update is completed
- Resolved an issue that affected Fan Curves with Fixed % and Fixed RPM when used with Fahrenheit units
- Resolved an issue that caused profile 4 in Performance Manager for DDR5 to not appear unless iCUE is restarted
- VOYAGER battery widget will now properly report its battery level
- Rotary Stack and Spiral Rainbow will now play properly on the Hydro X XG7 RGB
- Resolved an issue that caused the iCUE LINK HUB to display an improper text string when the language is changed
- Resolved an issue with the 1000D in Murals that prevented some options from appearing during configuration
- LT100 tower adjustment now works properly when changing the device tower arrangement

## **iCUE 5.10.82 Issues Resolved**

### **Software Enhancements**

- Resolved an issue that prevented firmware updates for some devices on iCUE macOS
- Implemented some minor design enhancements related to fonts and the use of more toggles where appropriate
- Exported system logs will now contain information for installed modules and packages
- Resolved some text overruns for various languages in iCUE

- iCUE will now continue downloading new modules after a lost internet connection is resolved
- 'Hide Graph' now works for Sensor widgets
- Zoom In/Out now works properly for Murals
- 'Set to Original Size' feature for Murals will no longer result in rotation buttons showing the wrong icon
- Resolved an issue that may cause iCUE to lose connection with the Philips Hue hub
- Resolved various crashes reported by our end users – thank you for continuing to submit your crash logs for us to review

### **DIY Product Enhancements**

- Resolved an issue that prevented DRAM to appear as a configurable device after an iCUE installation
- Improved notifications related to iCUE LINK System Hub and its over-current protection warning
- Implemented Profile import and export enhancements for all iCUE LINK devices to improve the experience of sharing lighting customization
- Resolved some calculation issues that resulted in incorrect values related to the DDR5 Profile Manager
- The framerate slider for XD5 Elite is now available in Device Settings

### **HID Product Enhancements**

- Improved the firmware update process for K70 CORE that resulted in an unresponsive state on rare occasions
- Changing polling rates for K70 CORE will no longer cause iCUE to crash
- Launch Application key assignment will now properly work when assigned to a key on K100 RGB
- Resolved various issues with K70 MAX related to actuation presets and secondary assignments
- iCUE will no longer crash when waking up from sleep if a VIRTUOSO XT connected in wireless mode
- Resolved an issue for iCUE NEXUS that prevented G-Key assignments from triggering
- Resolved an issue for iCUE NEXUS that prevented the background images for widgets from being applied properly

## **iCUE 5.9.105 Issues Resolved**

### **Software Enhancements**

- Resolved an issue that causes iCUE to crash on startup
- Resolved an issue with LS100 that causes iCUE to crash on device disconnect
- Resolved a conflict with iCUE with devices missing a manufacturer label in the USB string
- Improved the usability of vertical sliders when resizing the window
- Moving the window during an iCUE installation across monitor screens will no longer result in a black bar
- Resolved an issue with Launch Application that opens a folder instead of the application

- Users can now remove device modules even when iCUE is not connected to the internet
- Resolved an issue that causes other actions to be highlighted when assigning a modifier key
- Users will no longer be able to remove a module while it is updating
- Resolved various Dashboard bugs with adding and removing sensor widgets
- Nanoleaf in Canvas will no longer cause iCUE to crash after pairing multiple devices

#### **DIY Product Enhancements**

- The LED ring will now properly rotate with the LCD on all LCD based coolers
- Custom Fan Curves now properly work when used with various CPUID sensors
- Removing a Custom Cooling Fan Curve will no longer cause all fans to revert to the Balanced preset
- Hiding the graph for DIY devices will now properly work after an iCUE restart
- Resolved a conflict with data shown in Alerts when users switch between Fahrenheit and Celcius
- Voyager A1600 Cooler will no longer be shown as a Xeneon monitor
- Device Settings will no longer be missing features after a firmware update on H100i ELITE LCD coolers
- Custom Screen Preview will no longer show the wrong image with LINK LCD-based devices
- Resolved various minor bugs with the LCD screen and image customization
- DDR4 modules will no longer appear together with DDR5 modules (and vice versa)
- iCUE will no longer show Vengeance PRO DRAM as a name if it has been replaced with DOMINATOR DRAM

#### **HID Product Enhancements**

- Updated the hyperlink in the notification for DOLBY ATMOS
- The front LED and light edge LED on GLAIVE mice will no longer play incorrectly in iCUE
- M65 RGB PRO now properly saves hardware lighting to the device
- Resolved an issue with text overrun with various languages that prevented users from saving a hW profile
- Resolved an issue that prevented “Disable Key if Lock Button is On” from function
- The lighting playback is now properly synced between iCUE and the device for the Control Wheel tab
- Resolving an issue with NEXUS when using Lighting Link
- ENVISION PRO will no longer show battery status as Unknown at near empty battery levels
- Resolved an issue with audio devices crashing iCUE when switching from Playstation to Multipoint Mode

## **iCUE 5.8.130 Issues Resolved**

#### **Software Enhancements**

- Software and Games tab in iCUE settings have been combined into a new tab called SDK for better organization

- CPUID has been updated to the latest SDK and further optimized for better performance on the system when iCUE is open
- iCUE Home Sensors and Dashboard widgets will no longer randomly reset to default
- Resolved a rare issue that causes the name of a lighting effect to appear incorrectly

#### **HID Product Enhancements**

- Implemented Rapid Trigger customization for K70 MAX keyboards. Users will now be able to configure Rapid Trigger for any key or groups of keys. Please ensure you have also updated to the latest firmware on your device to enable this feature
- Media keys assigned with Volume Up and/or Volume Down will now repeat on a long key press
- K70 MAX will no longer cause a crash in iCUE when switching a profile through a secondary actuation
- NEXUS will no longer display a black screen when replugging a Slipstream Receiver

#### **DIY Product Enhancements**

- Resolved an issue with Commander Pro that prevented Custom Cooling presets from working properly
- All LCD based devices now support screen rotation – you can find this option under Device Settings. For a future update, the LED ring will also match the orientation of the LCD screen
- Improved the accuracy of wattage sensors for iCUE Digital PSUs
- Default fan curves for QX fans have been improved
- Time Warp lighting effect will no longer be affected after a firmware update
- Resolved various issues related to Alerts for Cooling Devices
- Improved the playback of certain lighting effects for the iCUE LINK GPU adapter
- Resolved an issue that caused cooling presets to disappear after updating the firmware on the Commander Pro

## **iCUE 5.7.106 Issues Resolved**

#### **Software Enhancements**

- Additional products have been added for iCUE SDK support
- CPUID SDK is now directly integrated into iCUE instead of previously relying on a service. Users should see overall system performance improvements with device polling and dashboard metrics. We are aware of an issue that some AMD GPUs may not report their temperature and will resolve this in iCUE v5.8 with an updated CPUID SDK
- Updated some of the fonts in iCUE for better readability, especially for East Asian typefaces
- iCUE will now properly notify users to restart after re-installing NVIDIA plugins
- Resolved an issue with iCUE not properly resizing windows automatically based on scaling
- Resolved an issue that prevented users from rotating devices in Murals after resizing

#### **DIY Product Enhancements**



- Time Warp Lighting Effect will no longer conflict with third-party lighting integrations

## **iCUE 5.6.98 Issues Resolved**

### **DIY Product Enhancements**

- Removed the notification message related to DDR4 that was present in the previous version. Please feel free to contact our support team if you have any questions or concerns

## **iCUE 5.6.97 Issues Resolved**

### **Software Enhancements**

- Resolved an issue with some text not being translated in the Installer
- Resolved an issue that prevented the installation process from starting if a different language is selected
- Resolved an issue that prevented some modules from being deleted
- Icons will no longer be skewed after deleting a profile with a custom image
- iCUE will no longer crash upon waking up from sleep if “Monitor Screen” is selected as a Mural
- Removing favorited Murals will no longer cause the device layout to reset to default
- iCUE for macOS will now properly uninstall
- Profile icon images will no longer be blurred in Murals
- Additional GPU sensors are now available for NVIDIA and AMD graphics cards
- SoundID plugin has been updated

### **HID Product Enhancements**

- iCUE NEXUS and VOYAGER laptop users will now be able to assign different colors to both the text and the graph for their sensors

### **DIY Product Enhancements**

- Users with CORSAIR DDR4 memory that has corrupted SPD values from a previous iCUE bug will be notified in the software to proceed with an RMA exchange to resolve the issue
- iCUE LINK Hydro Coolers predefined curve presets for custom cooling now matches the actual curve data for the Quiet/Balance/Extreme presets
- Lighting Setup and Device Settings are now available as tabs for the iCUE LINK System Hub
- iCUE will no longer crash if “Add to Home” option is used for Commander Core XT sensors in the Dashboard

## **iCUE 5.5.134 Issues Resolved**

### **Software Enhancements**

- Updated NVIDIA Broadcast SDK – NVIDIA 4000 series of GPUs are now properly supported
- Resolved an issue with iCUE firmware update that causes the window to display no information after a successful update

#### **HID Product Enhancements**

- SCIMITAR RGB ELITE will no longer be missing the Profile Switch button for re-assignment
- Renamed widgets for NEXUS will no longer cause a graphical overlap

#### **DIY Product Enhancements**

- The Cooling Preset curves (Quiet/Balanced/Extreme) for all iCUE LINK AIO Coolers will now use the coolant sensor instead of the CPU package sensor
- Resolved an issue with Time Warp that prevented the enabling of Hardware Mode
- Resolved a rare issue with QX RGB fans that may prevent the customization window from appearing
- Improved the lighting effects playback for QX RGB fans
- Resolved issues with “All” in the Quick Lighting Zone for QX RGB fans
- Gaming Mode has been removed from VOYAGER systems as a preset cooling mode

## **iCUE 5.4.98 Issues Resolved**

#### **Software Enhancements**

- A new version of the iCUE Plugin for Stream Deck is now available. Users will now be able to assign units of measurement (e.g., Celsius/Fahrenheit) to sensors
- Additional Context Notifications have been added to improve the user experience
- iCUE macOS® now supports direct upgrades from iCUE 4.33 to the latest version of iCUE 5.x
- iCUE macOS® now supports our crash reporting service
- Resolved an issue that allowed users to accidentally delete iCUE modules

#### **HID Product Enhancements**

- iCUE NEXUS and VOYAGER laptop users will now be able to assign different colors to both the text and the graph for their sensors
- Resolved an issue with NEXUS that would result in a black screen if users deleted and re-applied the same image
- The selected color icon for NEXUS screens will no longer always show as black

#### **DIY Product Enhancements**

- Renabled the XMP Performance Manager for DDR5 products that support it
- The iCUE LINK System Hub will no longer cause the device settings window to display nothing when the firmware update process begins

- Resolved an issue with WMI that would cause Windows to not detect any of our RGB Memory properly (thus affecting iCUE detection)

## **iCUE 5.3.102 Issues Resolved**

### **Software Enhancements**

- A new version of the iCUE plugin is now available in the Stream Deck store. The iCUE plugin now features CORSAIR audio features such as EQ change, microphone on/off toggle, surround sound toggle, battery widgets for wireless devices, and more!
- Lenovo iCUE laptops now have Murals support
- We have resolved an issue that caused some devices to no longer be detected after updating to Windows® 11 version 22H2
- Murals Audio Lighting Effect will no longer cause iCUE to crash when the system is awakened from Sleep/Hibernate

### **HID Product Enhancements**

- SoundID is now supported in iCUE for macOS®
- Resolved an issue with popping noises related to aggressive EQ settings in iCUE for macOS®
- Support has been added for iCUE LINK devices

### **DIY Product Enhancements**

- The Clock Screen Effect for Elite LCD Coolers will no longer cause iCUE to crash

## **iCUE 5.2.128 Issues Resolved**

### **Software Enhancements**

- The iCUE plugin for Stream Deck has been vastly improved. Users can now populate their Stream Deck keys to display any available sensor from the Dashboard. In addition, users will be able to toggle different cooling settings for their DIY devices, change the active Mural effect with a single button, and more
- iCUE-compatible motherboards and GPUs are now supported in Murals
- Users will now be able to choose different layout sizes (4:3 or 16:9) for Murals
- CPUID SDK has been updated
- Improved the stepping (1%) and the zoom range (1-200%) for the media editor when customizing an image for iCUE NEXUS, Profile Icons, Profile Backgrounds, Screen Settings (Elite LCD), and custom images/videos for Murals
- Long device names in Murals will no longer overlap the Hide Device button
- Unplugging a device will no longer reset the Murals layout(s)
- iCUE longer will no longer prevent an installation if the Portuguese language is selected

### **HID Product Enhancements**

- Unplugging and re-connecting a Dark Core RGB/SE mouse will no longer result in a duplication of Lighting Effects
- Dark Core RGB/SE now properly shows the correct alternating colors for the Water Lighting Effect
- Harpoon RGB will now properly wake a system from sleep
- Resolved a detection issue associated with the HS80 Receiver

## **iCUE 5.1.1114 Issues Resolved**

### **DIY Product Enhancements**

- We were able to identify an issue with the XMP Profile Manager affecting users with CORSAIR DDR4 memory in iCUE. As a result, we have temporarily removed the XMP Profile Manager feature and will re-implement it once we are able to provide a fix. Users on existing versions of 5.0 and 5.1 should upgrade to this version of iCUE immediately.

We apologize for any inconvenience as a result of this problem, and any users that have issues with iCUE and their DRAM should reach out to our tech support team at <https://help.corsair.com/hc/en-us/requests/new> for assistance.

## **iCUE 5.1.1113 Issues Resolved**

### **Software Enhancements**

- Resolved issues with missing iconography in Lighting Effects
- Various improvements have been made to module updates
- Improvements have been made to Murals to support resetting device sizes back to default and allowing users to simultaneously resize across different devices
- Color accuracy has been improved for the Monitor Screen effect in Murals on HDR-enabled monitors
- Users will now be able to reinstall a module after uninstalling it
- Resolved various issues with ASUS motherboard support

### **DIY Product Enhancements**

- Images in iCUE will no longer disappear for Elite LCD after a firmware update
- Resolved issues with RGB DRAM lighting playback in a different direction other than what is configured

### **HID Product Enhancements**

- iCUE Audio Driver has been updated with minor fixes

- Add Current Profile" is no longer missing from Dark Core RGB/SE

## **iCUE 5.0.147 Issues Resolved**

### **Software Enhancements**

- Dashboard sensors and plugins are now available as optional when no devices that rely on sensors are installed, this is part of the new modular update
- Resolved various bugs with iCUE Murals and improved the Murals Wizard
- Murals now has a "Send to Back" order feature when stacking device images on top of one another
- The coolant temp widget is no longer disabled when an Alert is triggered
- Retrying firmware updates through notifications will now properly restart the firmware update process
- Resolved an issue with scrolling when the pointer is hovering over the bottom of the Home screen
- Sensors and Fan widgets are no longer shown in random order on the Dashboard
- Resolved an issue that prevented Key Assignments to from being assigned to a key after the Clear feature was used

### **HID Product Enhancements**

- K100 AIR and K65 MINI RGB will no longer cause a crash when creating a lighting effect from the Library while the devices are in wireless mode
- K65 MINI RGB will now properly show a tilde (~) when FN+Shift+Esc is pressed
- Resolved issues with Retain Original Key Output and Disable Key if Lock Button is On for certain keys for K65 MINI RGB
- Resolved an issue that prevented iCUE from detecting the keyboard on Voyager laptops